

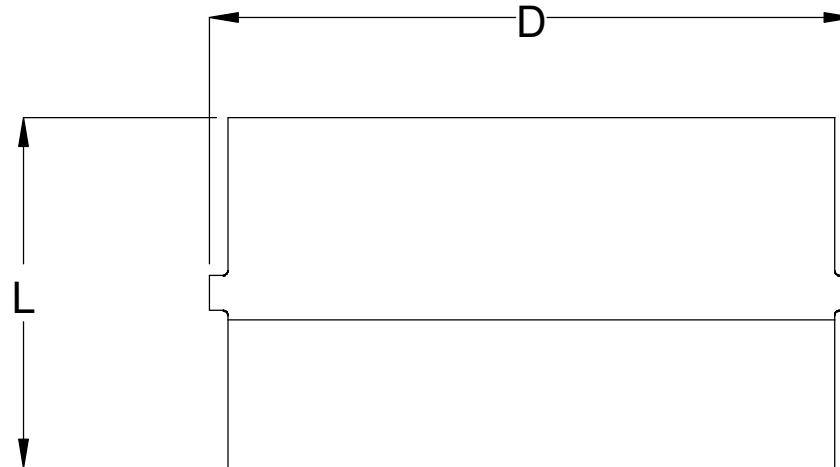


Specified Fittings, LLC

164 West Smith Road • PO Box 28157 • Bellingham, WA 98228-0157 | Email: sales@specfit.com

Bellingham: 360-398-7700 | 360-398-7051 Fax
Stevensville: 406-777-3466 | 406-777-7181 Fax
Mexico (Toll Free): 800-429-1705 | 800-574-1075 Fax

SIZE	L	D
2"	11.7	3.94
3"	11.5	5.0
4"	11.5	6.0
6"	15	8.6
8"	17.63	10.63
10"	16.64	12.5
12"	22.38	14.38
14"	22.25	16.93
16"	22	19.25
18"	22	21.25
20"	21.5	22.9
24"	21.25	27.26
26"	28	29.75
28"	23.25	31.3
30"	23.5	33.9
32"	28	36.13
36"	24.88	39.13
42"	42	47.13
48"	42	53.5
54"	42	59.63
63"	42	66.8



Fittings between 20" and 48" are designed to be fused on a 1648 or smaller field machine, If longer lengths are required, please contact Specified Fittings for special requirements.

DISCLAIMER - PLEASE READ

- 1) All dimensions approximate, subject to change without notice
--Angle tolerance is +/- 2 degrees
--All other dimensions to +/- 1"
- 2) This drawing only applicable if a copy is referenced at time of order.
--Without a copy of drawing, fitting construction may differ from that shown.
- 3) Subject to Specified Fittings Standard Terms and Conditions.

TITLE
HDPE WALL ANCHORS
PLAIN-END / BUTT-FUSE
DR7-32.5 FULLY RATED
PE4710

DATE
3-19-2019