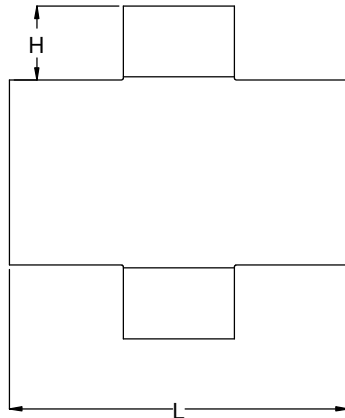
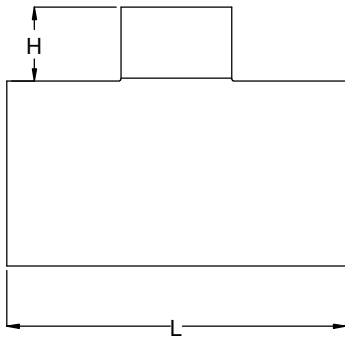




Specified Fittings, LLC

164 West Smith Road • PO Box 28157 • Bellingham, WA 98228-0157 | Email: sales@specfit.com

Bellingham: 360-398-7700 | 360-398-7051 Fax
 Stevensville: 406-777-3466 | 406-777-7181 Fax
 Mexico (Toll Free): 800-429-1705 | 800-574-1075 Fax



SIZE	L	H
8x4	23.5	6
10x4	23.5	6
10X6	26	8
12x4	26.5	6
12X6	29	8
12X8	31	8.5
14x4	26.5	6
14X6	29	8
14X8	31	8.5
16X6	29	8
16X8	31	8.5
16X10	33	8.5
18X6	31	8
18X8	33	8.5
18X10	35	8.5
18X12	37	10
20X6	31	8
20X8	33	8.5
20X10	35	8.5
20X12	37	10
20X14	39	10.5
22X6	35	8
22X8	37	8.5
22X10	39	8.5
22X12	41	10
22X14	43	10.5
22X16	45	10.5

SIZE	L	H
24X6	35	8
24X8	37	8.5
24X10	39	8.5
24X12	41	10
24X14	43	10.5
24X16	45	10.5
30X6	43.75	8
30X8	45.75	8.5
30X10	47.75	8.5
30X12	49.75	10
30X14	51	10.5
30X16	53	10.5
32X6	43.75	8
32X8	45.75	8.5
32X10	47.75	8.5
32X12	49.75	10
32X14	51	10.5
32X16	53	10.5
32X18	55	11.5
32X20	57	11.5
32X22	59	13.5
36X6	55	8
36X8	57	8.5
36x10	59	8.5
36X12	61	10
36X14	63	10.5
36X16	65	10.5

SIZE	L	H
36X18	67	11.5
36X20	69	11.5
36X24	73	13.5
42X6	55	8
42X8	57	8.5
42X10	59	8.5
42X12	61	10
42X14	63	10.5
42X16	65	10.5
42X18	67	11.5
42X20	69	11.5
42X24	73	13.5
42X30	79	18
48X6	55	8
48X8	57	8.5
48X10	59	8.5
48X12	61	10
48X14	63	10.5
48X16	65	10.5
48X18	67	11.5
48X20	69	11.5
48X24	73	13.5
48X30	79	18
48X32	81	18

TITLE

FABRICATED SMOOTH-FLOW TEES & CROSSES
 FULLY RATED DR9-32.5
 DE-RATED DR7
 FM150/200/250/267 24" AND UNDER

DATE

3-22-2019

DISCLAIMER - PLEASE READ

- 1) All dimensions approximate, subject to change without notice
 --Angle tolerance is +/- 2 degrees
 --All other dimensions to +/- 1"
- 2) This drawing only applicable if a copy is referenced at time of order.
 --Without a copy of drawing, fitting construction may differ from that shown.
- 3) Subject to Specified Fittings Standard Terms and Conditions.