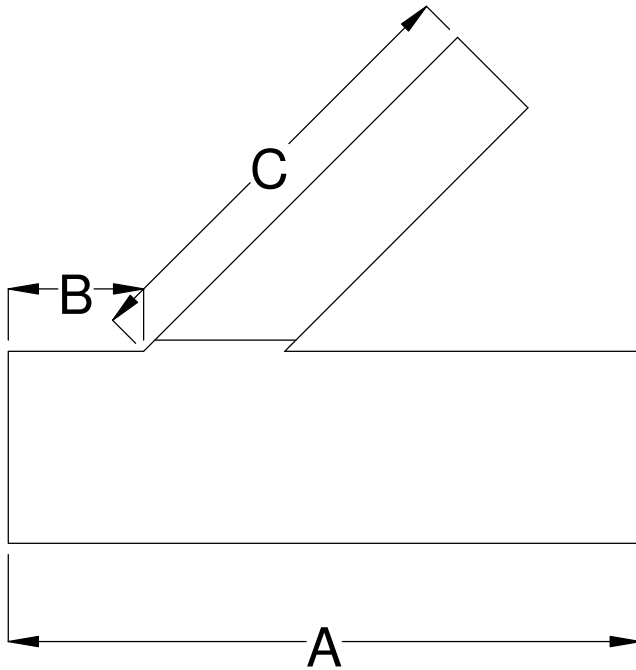




Specified Fittings, LLC

164 West Smith Road • PO Box 28157 • Bellingham, WA 98228-0157 | Email: sales@specfit.com

Bellingham: 360-398-7700 | 360-398-7051 Fax
Stevensville: 406-777-3466 | 406-777-7181 Fax
Mexico (Toll Free): 800-429-1705 | 800-574-1075 Fax



SIZE	A	B	C
10X6	38.5	29.5	7.5
12X6	42	29.5	9
12X8	44.5	32.25	9
14X6	42	29.5	9
14X8	44.5	32.25	9
16X6	44.5	29.5	10
16X8	47	32.25	10
16X10	50	35.25	10
18X6	44.5	29.5	10
18X8	47	32.25	10
18X10	50	35.25	10
18X12	53	37.5	10
20X6	44.5	29.5	10
20X8	47	32.25	10
20X10	50	35.25	10
20X12	53	37.5	10
20X14	54.5	39	10
24X6	46.5	29.5	12
24X8	49	32.25	12
24X10	52	35.25	12
24X12	55	37.5	12
24X14	57	39	12
24X16	62	45.5	12

DISCLAIMER - PLEASE READ

- 1) All dimensions approximate, subject to change without notice
--Angle tolerance is +/- 2 degrees
--All other dimensions to +/- 1"
- 2) This drawing only applicable if a copy is referenced at time of order.
--Without a copy of drawing, fitting construction may differ from that shown.
- 3) Subject to Specified Fittings Standard Terms and Conditions.

TITLE

FABRICATED REDUCING WYES
FULLY RATED DR11-32.5

DATE

3-21-2019