

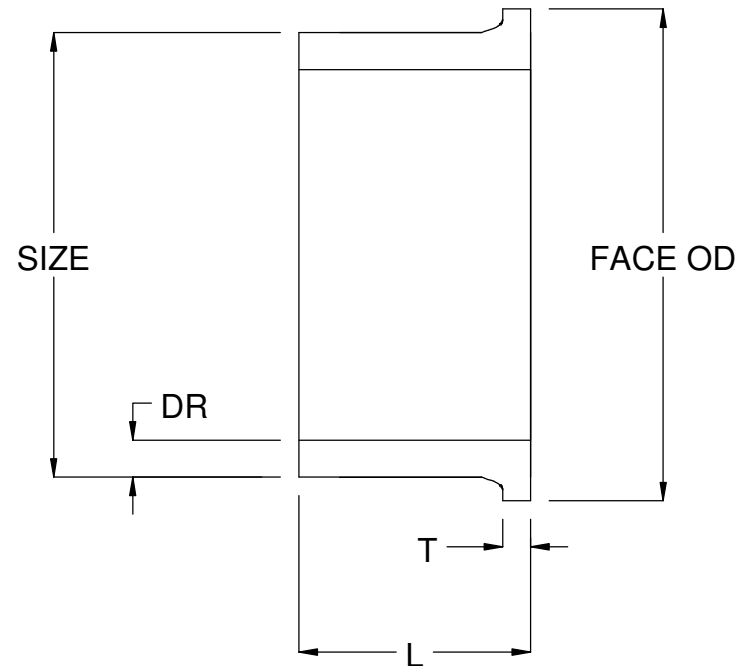


Specified Fittings, LLC

164 West Smith Road • PO Box 28157 • Bellingham, WA 98228-0157 | Email: sales@specfit.com

Bellingham: 360-398-7700 | 360-398-7051 Fax
Stevensville: 406-777-3466 | 406-777-7181 Fax
Mexico (Toll Free): 800-429-1705 | 800-574-1075 Fax

SIZE	DR	FACE	T	L
3/4"	7	2	0.20	4
1"	7	2.37	0.21	4
1-1/4"	7	2.75	0.25	4
1-1/2"	7	3.16	0.25-0.34	4-6
2"	7	3.63-3.94	0.39-0.51	6
3"	7	4.5-5	0.63-0.67	6
4"	7	5.81-6.13	0.54-0.91	6-7.13
5"	7	7.5	0.99	6
6"	7	8-8.5	0.78-1.26	8-8.27
8"	7	10.38-10.63	1-1.65	9.33-11
10"	7	12.5-13	1.93-2.05	9.1-11
12"	7	15-15.5	2.28-2.32	12
14"	7	16.75-17.5	2.5-2.56	12
16"	7	19.22-20	2.86-2.91	12-12.5
18"	7	19.88-21.12	3.21-3.29	12-12.7
20"	7	22.88-23.5	3.57-3.66	12.8
24"	7	27.25	4.31	14
24"	7	27.25-28	2.76	12-14



DISCLAIMER - PLEASE READ

- 1) All dimensions approximate, subject to change without notice
--Angle tolerance is +/- 2 degrees
--All other dimensions to +/- 1"
- 2) This drawing only applicable if a copy is referenced at time of order.
--Without a copy of drawing, fitting construction may differ from that shown.
- 3) Subject to Specified Fittings Standard Terms and Conditions.

TITLE

IPS DR7 HDPE FLANGE ADAPTERS

DATE

3-19-2016