

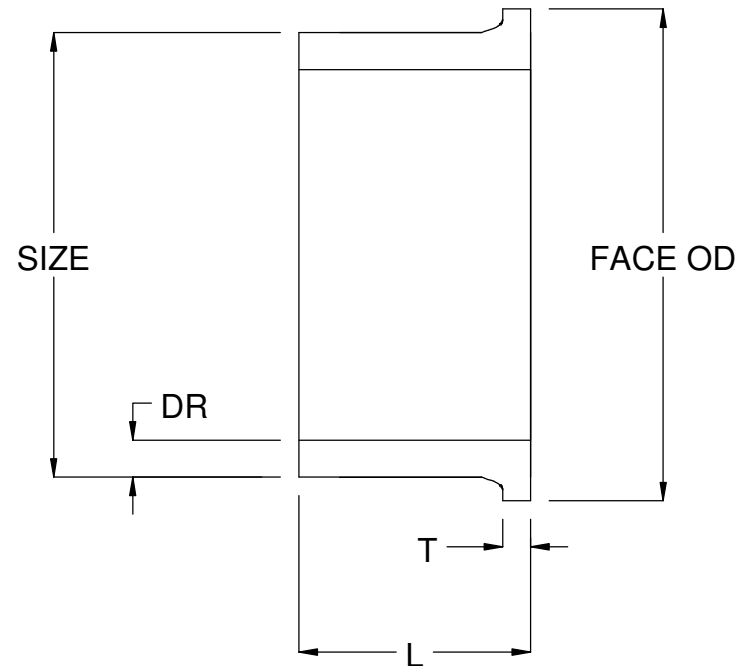


Specified Fittings, LLC

164 West Smith Road • PO Box 28157 • Bellingham, WA 98228-0157 | Email: sales@specfit.com

Bellingham: 360-398-7700 | 360-398-7051 Fax
 Stevensville: 406-777-3466 | 406-777-7181 Fax
 Mexico (Toll Free): 800-429-1705 | 800-574-1075 Fax

SIZE	DR	FACE	T	L
3/4"	11	2	0.20	4
1"	11	2.37	0.21	4
1-1/4"	11	2.75	0.25	4
1-1/2"	11	3.16	0.25-0.34	4-6
2"	11	3.63-3.94	0.34-0.39	6
3"	11	4.5-5	0.45-0.65	6
4"	11	6-6.13	0.54-0.76	6-7.13
5"	11	7.5	0.63	6
6"	11	8-8.5	0.77-0.98	8
8"	11	10.38-10.63	0.97-1.02	9.25-11
10"	11	12.5-13	1.22-1.38	9.25-12
12"	11	15-15.5	1.45-1.61	11-12
14"	11	16.75-17.5	1.5-1.67	11-12
16"	11	19.22-20	1.73-1.89	11.5-12
18"	11	19.88-21.12	1.93-2.05	11.5-12
20"	11	22.88-23.5	2.3	12
22"	11	25.6	2.5	12
24"	11	27.28-28	2.76	12-14
26"	11	29.5-30	3	12.75-15
28"	11	31.25-32.3	3.18-3.27	13.5-15
30"	11	33.75-34.3	3.41-3.52	14-15
32"	11	36.5	3.64	15
34"	11	38.5	4.72	15
36"	11	39.1-40.8	4.09-4.15	15.5-16.5
42"	11	47.13	4.77	21
48"	11	53.5	5.45	21



DISCLAIMER - PLEASE READ

- 1) All dimensions approximate, subject to change without notice
 --Angle tolerance is +/- 2 degrees
 --All other dimensions to +/- 1"
- 2) This drawing only applicable if a copy is referenced at time of order.
 --Without a copy of drawing, fitting construction may differ from that shown.
- 3) Subject to Specified Fittings Standard Terms and Conditions.

TITLE

IPS DR11 HDPE FLANGE ADAPTERS

DATE

3-19-2016