



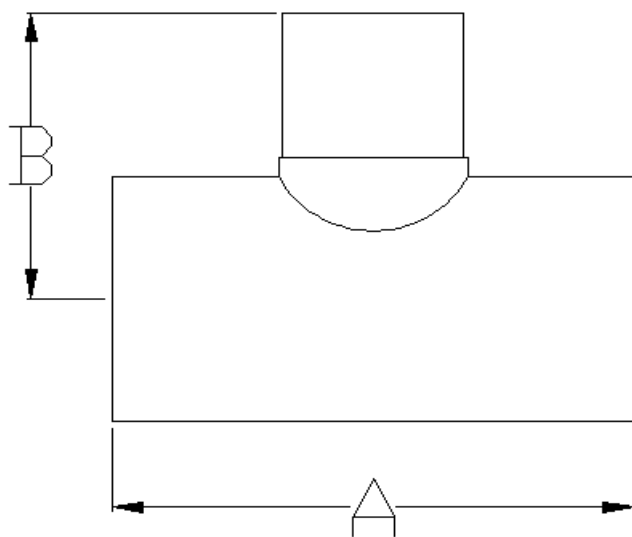
# SPECIFIED FITTINGS, LLC

164 W. SMITH RD  
BELLINGHAM, WA 98226  
888-734-8846 (T)  
888-734-8258 (F)  
[spec@specfit.com](mailto:spec@specfit.com)

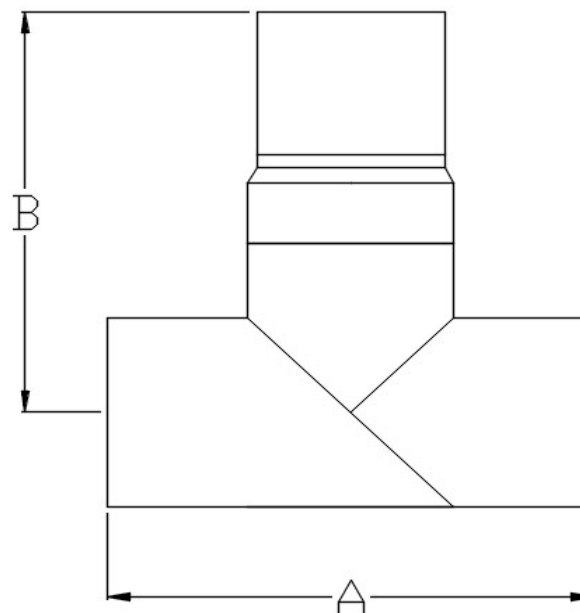
483 STEVENSVILLE AIRPORT RD.  
STEVENSVILLE, MT 59870  
406-777-3466 (T)  
406-777-7181 (F)  
[sales@specfit.com](mailto:sales@specfit.com)

[www.specfit.com](http://www.specfit.com)

STYLE A



STYLE B



Description: IPS HDPE FABRICATED REDUCING TEE  
PLAIN-ENDS

Material: HDPE

Size: 3"-24"  
CLASS 150, CLASS 200

PSI RATING: 150, 200

Version 1.5, Copyright 2017

**NOTE:**

Fittings are manufactured and tested to the requirements of ASTM D3035, D3261, AWWA C901 or C906, and FM 1613. These fittings are tested to the requirements of ASTM D3261 and are compatible for heat fusion with any pipe and or fitting of compatible resin. Made from PE3408/3608 or PE4710 material. All raw material shall comply with NSF-61.

Other OD's, SDR's and Pressure Ratings available upon request.

Per FM 1613 and AWWA C906, the working pressure rating equals the pressure class with an allowance included in the WPR for pressure surge.

FOR DISCLAIMER REFER TO FM DIMENSION CATALOG.



# SPECIFIED FITTINGS, LLC

**164 W. SMITH RD  
BELLINGHAM, WA 98226**

**888-734-8846 (T)**

**888-734-8258 (F)**

[spec@specfit.com](mailto:spec@specfit.com)

**483 STEVENSVILLE AIRPORT RD.**

**STEVENSVILLE, MT 59870**

**406-777-3466 (T)**

**406-777-7181 (F)**

[sales@specfit.com](mailto:sales@specfit.com)

[www.specfit.com](http://www.specfit.com)

## IPS HDPE FABRICATED REDUCING TEE DIMENSION CHART

SIZE	4X3	4X3	5X3	5X3	5X4	5X4	6X3	6X3	6X4	6X4	6X5	6X5
A	15.5	15.5	16	16	17	17	16	16	17	17	21	21
B	13.25	12.5	8.25	8.25	15.75	15.75	8.75	8.75	9.25	9.25	18.25	18.25
PRESSURE CLASS	150	200	150	200	150	200	150	200	150	200	150	200
PART #	HD82043FM150	HD82043FM200	HD82053FM150	HD82053FM200	HD82054FM150	HD82054FM200	HD82063FM150	HD82063FM200	HD82064FM150	HD82064FM200	HD82065FM150	HD82065FM200
STYLE	B	B	A	A	B	B	A	A	A	A	B	B
SIZE	8X3	8X3	8X4	8X4	8X5	8X5	8X6	8X6	10X3	10X3	10X4	10X4
A	17	17	18	18	19	19	23.5	23.5	17	17	18	18
B	9.75	9.75	10.25	10.25	12.25	12.25	17.75	17.75	11	11	11.5	11.5
PRESSURE CLASS	150	200	150	200	150	200	150	200	150	200	150	200
PART #	HD82083FM150	HD82083FM200	HD82084FM150	HD82084FM200	HD82085FM150	HD82085FM200	HD82086FM150	HD82086FM200	HD820103FM150	HD820103FM200	HD820104FM150	HD820104FM200
STYLE	A	A	A	A	A	A	B	B	A	A	A	A
SIZE	10X5	10X5	10X6	10X6	10X8	10X8	12X3	12X3	12X4	12X4	12X5	12X5
A	19	19	20	20	26.75	26.75	20	20	21	21	22	22
B	13.5	13.5	13.5	13.5	25.5	25.5	12	12	12.5	12.5	14.5	14.5
PRESSURE CLASS	150	200	150	200	150	200	150	200	150	200	150	200
PART #	HD820105FM150	HD820105FM200	HD820106FM150	HD820106FM200	HD820108FM150	HD820108FM200	HD820123FM150	HD820123FM200	HD820124FM150	HD820124FM200	HD820125FM150	HD820125FM200
STYLE	A	A	A	A	B	B	A	A	A	A	A	A
SIZE	12X6	12X6	12X8	12X8	12X10	12X10	14X3	14X3	14X4	14X4	14X5	14X5
A	23	23	25	25	31.75	31.75	20	20	21	21	22	22
B	14.5	14.5	15	15	26	26	12.5	12.5	13	13	15	15
PRESSURE CLASS	150	200	150	200	150	200	150	200	150	200	150	200
PART #	HD820126FM150	HD820126FM200	HD820128FM150	HD820128FM200	HD8201210FM150	HD8201210FM200	HD820143FM150	HD820143FM200	HD820144FM150	HD820144FM200	HD820145FM150	HD820145FM200
STYLE	A	A	A	A	B	B	A	A	A	A	A	A



# SPECIFIED FITTINGS, LLC

164 W. SMITH RD  
BELLINGHAM, WA 98226

888-734-8846 (T)

888-734-8258 (F)

[spec@specfit.com](mailto:spec@specfit.com)

483 STEVENSVILLE AIRPORT RD.  
STEVENSVILLE, MT 59870

406-777-3466 (T)

406-777-7181 (F)

[sales@specfit.com](mailto:sales@specfit.com)

[www.specfit.com](http://www.specfit.com)

## IPS HDPE FABRICATED REDUCING TEE DIMENSION CHART

SIZE	14X6	14X6	14X8	14X8	14X10	14X10	14X12	14X12	16X3	16X3	16X4	16X4
A	23	23	25	25	32.5	32.5	33	33	20	20	21	21
B	15	15	15.5	15.5	28.75	28.75	38.5	38.5	13.5	13.5	14	14
PRESSURE CLASS	150	200	150	200	150	200	150	200	150	200	150	200
PART #	HD820146FM150	HD820146FM200	HD820148FM150	HD820148FM200	HD8201410FM150	HD8201410FM200	HD8201412FM150	HD8201412FM200	HD820163FM150	HD820163FM200	HD820164FM150	HD820164FM200
STYLE	A	A	A	A	B	B	B	B	A	A	A	A

SIZE	16X5	16X5	16X6	16X6	16X8	16X8	16X10	16X10	16X12	16X12	16X14	16X14
A	22	22	23	23	25	25	28.75	28.75	35	35	35	35
B	16	16	16	16	16.5	16.5	16.5	16.5	32.25	32.25	31.25	31.25
PRESSURE CLASS	150	200	150	200	150	200	150	200	150	200	150	200
PART #	HD820165FM150	HD820165FM200	HD820166FM150	HD820166FM200	HD820168FM150	HD820168FM200	HD8201610FM150	HD8201610FM200	HD8201612FM150	HD8201612FM200	HD8201614FM150	HD8201614FM200
STYLE	A	A	A	A	A	A	A	A	B	B	B	B

SIZE	18X3	18X3	18X4	18X4	18X5	18X5	18X6	18X6	18X8	18X8	18X10	18X10
A	20	20	21	21	22	22	23	23	25	25	30.75	30.75
B	14.5	14.5	15	15	17	17	17	17	17.5	17.5	17.5	17.5
PRESSURE CLASS	150	200	150	200	150	200	150	200	150	200	150	200
PART #	HD820183FM150	HD820183FM200	HD820184FM150	HD820184FM200	HD820185FM150	HD820185FM200	HD820186FM150	HD820186FM200	HD820188FM150	HD820188FM200	HD8201810FM150	HD8201810FM200
STYLE	A	A	A	A	A	A	A	A	A	A	A	A

SIZE												
A												
B												
PRESSURE CLASS												
PART #												
STYLE												



# SPECIFIED FITTINGS, LLC

**164 W. SMITH RD  
BELLINGHAM, WA 98226**

**888-734-8846 (T)**

**888-734-8258 (F)**

[spec@specfit.com](mailto:spec@specfit.com)

**483 STEVENSVILLE AIRPORT RD.**

**STEVENSVILLE, MT 59870**

**406-777-3466 (T)**

**406-777-7181 (F)**

[sales@specfit.com](mailto:sales@specfit.com)

[www.specfit.com](http://www.specfit.com)

## IPS HDPE FABRICATED REDUCING TEE DIMENSION CHART

SIZE	18X12	18X12	18X14	18X14	18X16	18X16	20X3	20X3	20X4	20X4	20X5	20X5
A	32.75	32.75	37	37	37	37	27.5	27.5	29	29	30	30
B	19	19	32	32	32.25	32.25	15.5	15.5	16	16	18	18
PRESSURE CLASS	150	200	150	200	150	200	150	200	150	200	150	200
PART #	HD8201812FM150	HD8201812FM200	HD8201814FM150	HD8201814FM200	HD8201816FM150	HD8201816FM200	HD820203FM150	HD820203FM200	HD820204FM150	HD820204FM200	HD820205FM150	HD820205FM200
STYLE	A	A	B	B	B	B	A	A	A	A	A	A

SIZE	20X6	20X6	20X8	20X8	20X10	20X10	20X12	20X12	20X14	20X14	20X16	20X16
A	31	31	33.5	33.5	36	36	38	38	42	42	38.5	38.5
B	18	18	18.5	18.5	18.5	18.5	20	20	20	20	36	36
PRESSURE CLASS	150	200	150	200	150	200	150	200	150	200	150	200
PART #	HD820206FM150	HD820206FM200	HD820208FM150	HD820208FM200	HD8202010FM150	HD8202010FM200	HD8202012FM150	HD8202012FM200	HD8202014FM150	HD8202014FM200	HD820208FM150	HD820208FM200
STYLE	A	A	A	A	A	A	A	A	A	A	B	B

SIZE	20X18	20X18	24X3	24X3	24X4	24X4	24X5	24X5	24X6	24X6	24X8	24X8
A	38.5	38.5	27.5	27.5	29	29	30	30	31	31	33.5	33.5
B	35.25	35.25	17.5	17.5	18	18	20	20	20	20	20.5	20.5
PRESSURE CLASS	150	200	150	200	150	200	150	200	150	200	150	200
PART #	HD8202018FM150	HD8202018FM200	HD820243FM150	HD820243FM200	HD820244FM150	HD820244FM200	HD820245FM150	HD820245FM200	HD820246FM150	HD820246FM200	HD820248FM150	HD820248FM200
STYLE	B	B	A	A	A	A	A	A	A	A	A	A

SIZE	24X10	24X10	24X12	24X12	24X14	24X14	24X16	24X16	24X18	24X18	24X20	24X20
A	36	36	38	38	44	44	44	56	44	56	44	56
B	20.5	20.5	22	22	22	22	43.5	49.5	40.75	46.75	39	45
PRESSURE CLASS	150	200	150	200	150	200	150	200	150	200	150	200
PART #	HD8202410FM150	HD8202410FM200	HD8202412FM150	HD8202412FM200	HD8202414FM150	HD8202414FM200	HD8202416FM150	HD8202416FM200	HD8202418FM150	HD8202418FM200	HD8202420FM150	HD8202420FM200
STYLE	A	A	A	A	A	A	B	B	B	B	B	B



# **SPECIFIED FITTINGS, LLC**

**164 W. SMITH RD  
BELLINGHAM, WA 98226**

**888-734-8846 (T)**

**888-734-8258 (F)**

[spec@specfit.com](mailto:spec@specfit.com)

**483 STEVENSVILLE AIRPORT RD.**

**STEVENSVILLE, MT 59870**

**406-777-3466 (T)**

**406-777-7181 (F)**

[sales@specfit.com](mailto:sales@specfit.com)

[www.specfit.com](http://www.specfit.com)

## IPS HDPE FABRICATED REDUCING TEE DIMENSION CHART

SIZE	24X22	24X22										
A	44	56										
B	37.25	43.25										
PRESSURE CLASS	150	200										
PART #	HD8202422FM150	HD8202422FM200										
STYLE	B	B										