

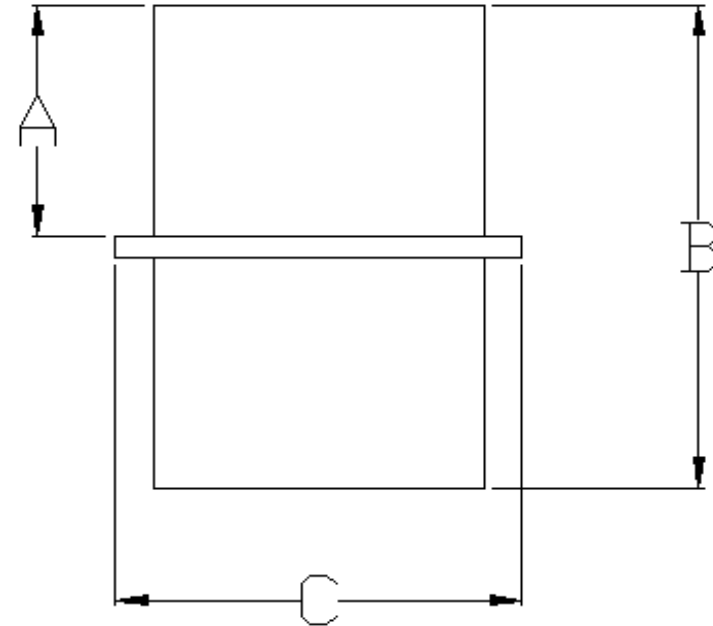
SPECIFIED FITTINGS, LLC

164 W. SMITH RD
 BELLINGHAM, WA 98226
 888-734-8846 (T)
 888-734-8258 (F)
spec@specfit.com

483 STEVENSVILLE AIRPORT RD.
 STEVENSVILLE, MT 59870
 406-777-3466 (T)
 406-777-7181 (F)
sales@specfit.com

www.specfit.com

SIZE	A	B	C	CLASS	PART #	SIZE	A	B	C	CLASS	PART #
2"	5.5	11.25	4	150	HD6912FM150	22"	9.5	20.75	25.5	150	HD69122FM150
2"	5.75	11.5	4	200	HD6912FM200	22"	8	19.25	25.5	200	HD69122FM200
3"	5.5	11	5	150	HD6913FM150	24"	9.25	20.5	27.25	150	HD69124FM150
3"	5.5	11	4.75	200	HD6913FM200	24"	8.5	19.75	27.25	200	HD69124FM200
4"	5.25	10.75	6	150	HD6914FM150						
4"	5.75	11.5	6	200	HD6914FM200						
6"	7	14.5	8.5	150	HD6916FM150						
6"	7	14.25	8.5	200	HD6916FM200						
8"	8.25	17	10.75	150	HD6918FM150						
8"	8	16.75	10.75	200	HD6918FM200						
10"	7.75	16.25	12.5	150	HD69110FM150						
10"	7.5	16	12.5	200	HD69110FM200						
12"	10.25	21.75	15	150	HD69112FM150						
12"	10	22	15	200	HD69112FM200						
14"	10.25	21.75	17.25	150	HD69114FM150						
14"	10	21.5	17.25	200	HD69114FM200						
16"	10	21.25	19.25	150	HD69116FM150						
16"	9.75	20.75	19.25	200	HD69116FM200						
18"	10	21	21.25	150	HD69118FM150						
18"	9.5	20.75	21.25	200	HD69118FM200						
20"	9.75	20.75	23	150	HD69120FM150						
20"	9	20.75	23	200	HD69120FM200						



Description: IPS HDPE WALL ANCHOR
 PLAIN-ENDS
 Material: HDPE
 Size: 2" - 24"
 CLASS 150, CLASS 200
 PSI RATINGS 150, 200

NOTE:

Fittings are manufactured and tested to the requirements of ASTM D3035, D3261, AWWA C901 or C906, and FM 1613. These fittings are tested to the requirements of ASTM D3261 and are compatible for heat fusion with any pipe and or fitting of compatible resin. Made from PE3408/3608 or PE4710 material. All raw material shall comply with NSF-61. Other OD's, SDR's and Pressure Ratings available upon request. Per FM 1613 and AWWA C906, the working pressure rating equals the pressure class with an allowance included in the WPR for pressure surge.
 FOR DISCLAIMER REFER TO FM DIMENSION CATALOG.