

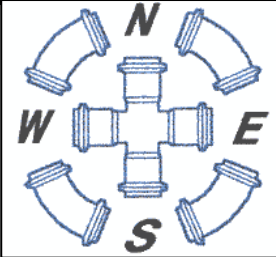
Specified Fittings, LLC

164 West Smith Road • PO Box 28157 • Bellingham, WA 98228-0157 | Email: sales@specfit.com

Bellingham: 360-398-7700 | 360-398-7051 Fax

Stevensville: 406-777-3466 | 406-777-7181 Fax

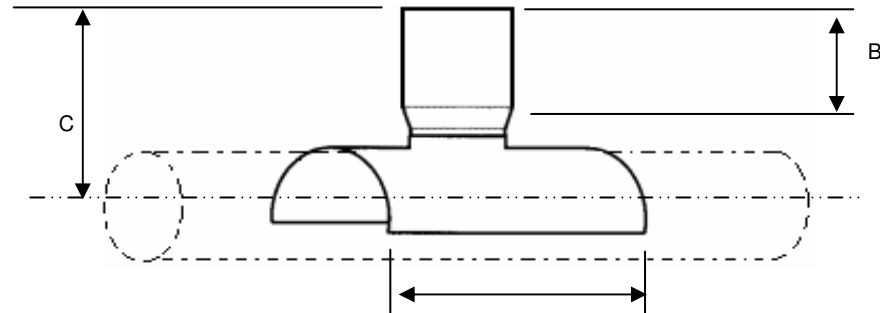
Mexico (Toll Free): 800-429-1705 | 800-574-1075 Fax



SIGNED DRAWINGS MUST ACCOMPANY PURCHASE ORDER OR DIMENSIONS OF FITTINGS WILL NOT BE GUARANTEED

DISCLAIMER - PLEASE READ

- 1) All dimensions approximate, subject to change without notice
--Angle tolerance is +/- 2 degrees
--All other dimensions to +/- 1"
- 2) This drawing only applicable if a copy is referenced at time of order.
--Without a copy of drawing, fitting construction may differ from that shown.
- 3) Subject to Specified Fittings Standard Terms and Conditions.



Description:	Saddle Tee
Material:	IPS DWV PVC
Size:	See Chart
Configuration:	Solvent Weld x Solvent Weld

SOLVENT WELD BASE x SOLVENT WELD OUTLET IPS SADDLE TEES

SIZE	6x4	8x4	8x6	10x4	10x6	10x8	12x4	12x6	12x8	12x10	14x4	14x6
A	17.25	17.25	19.25	17.25	19.5	21.5	17.5	19.5	21.5	23.75	17.5	19.5
B	2.5	2.5	3.5	2.5	3.5	4.5	2.5	3.5	4.5	5.5	2.5	3.5
C	7.5	8.5	9.75	9.5	11	12.25	10.5	12	13.25	14.5	11.25	12.5

SIZE	14x8	14x10	14x12	16x4	16x6	16x8	16x10	16x12	16x14	18x4	18x6	18x8
A	21.5	23.75	25.75	17.5	19.75	21.75	23.75	25.75	27	17.75	19.75	21.75
B	4.5	5.5	6.5	2.5	3.5	4.5	5.5	6.5	7	2.5	3.5	4.5
C	14	15	16.25	12	13.5	15	16	17.25	18.25	13	14.5	16

SIZE	18x10	18x12	18x14	18x16	20x4	20x6	20x8	20x10	20x12	20x14	20x16	20x18
A	24	26	27.25	29.25	17.75	20	22	24	26	27.25	29.25	31.25
B	5.5	6.5	7	8	2.5	3.5	4.5	5.5	6.5	7	8	9
C	17	18.25	19.25	20.5	14	15.5	17	18	19.25	20.25	21.5	23.25

SIZE	24x4	24x6	24x8	24x10	24x12	24x14	24x16	24x18	24x20
A	18	20	22	24.25	26.25	27.5	29.5	31.5	33.5
B	2.5	3.5	4.5	5.5	6.5	7	8	9	10
C	16	17.5	19	20	21.25	22.25	23.5	25.25	27