

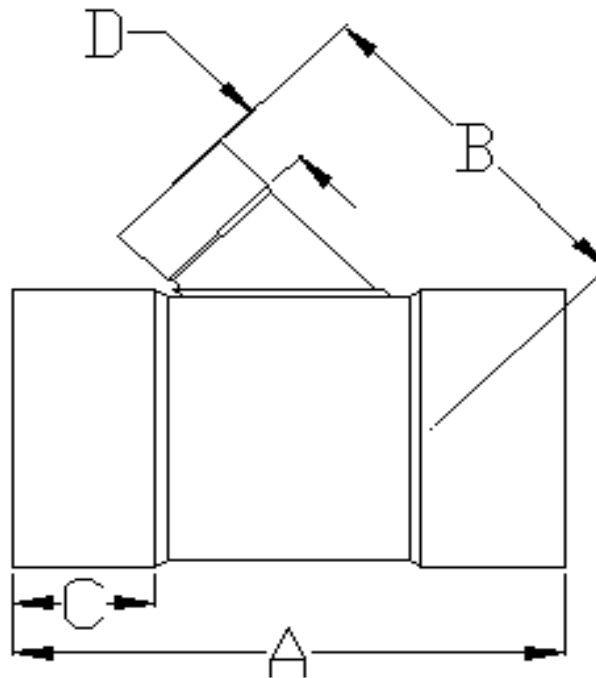


Specified Fittings, LLC

164 West Smith Road • PO Box 28157 • Bellingham, WA 98228-0157 | Email: sales@specfit.com

Bellingham: 360-398-7700 | 360-398-7051 Fax
Stevensville: 406-777-3466 | 406-777-7181 Fax
Mexico (Toll Free): 800-429-1705 | 800-574-1075 Fax

SIGNED DRAWINGS MUST ACCOMPANY PURCHASE ORDER OR DIMENSIONS OF FITTINGS WILL NOT BE GUARANTEED



DISCLAIMER - PLEASE READ

- 1) All dimensions approximate, subject to change without notice
--Angle tolerance is +/- 2 degrees
--All other dimensions to +/- 1"
- 2) This drawing only applicable if a copy is referenced at time of order.
--Without a copy of drawing, fitting construction may differ from that shown.
- 3) Subject to Specified Fittings Standard Terms and Conditions.

Description: WYE
Material: PVC SDR 35
Part #'s: 81920(4-36)
Configuration: ALL ENDS SOLVENT WELD

D.E.

Page #



**SPECIFIED
FITTINGS**

**164 WEST SMITH ROAD, PO BOX 28157
BELLINGHAM, WA 98228-0157**

**Toll-free telephone and fax
(888) 734-8846 (888) 734-8258 (F)
e-mail: sales@specfit.com**

**SIGNED DRAWINGS MUST ACCOMPANY PURCHASE ORDER OR
DIMENSIONS OF FITTINGS WILL NOT BE GUARANTEED**

SIZE	A	B	C	D
4	12.75	9	2.25	2.25
6 X 4	15.75	10.5	3.25	2.25
6	19.75	12.5	3.25	3.25
8 X 4	17.5	12	4.25	2.25
8 X 6	21	14	4.25	3.25
8	25.75	16.5	4.25	4.25
10 X 4	20.75	13.5	5.25	2.25
10 X 6	24.5	15.5	5.25	3.25
10 X 8	28	18	5.25	4.25
10	31	20.25	5.25	5.25
12 X 4	23	14.75	6.25	2.25
12 X 6	26	17	6.25	3.25
12 X 8	29	19.25	6.25	4.25
12 X 10	32	21.75	6.25	5.25
12	36	24	6.25	6.25
15 X 4	26.25	16.75	7.25	2.25
15 X 6	29	19	7.25	3.25
15 X 8	32	21.25	7.25	4.25
15 X 10	35.5	23.75	7.25	5.25
15 X 12	38.75	26	7.25	6.25
15	43.25	29	7.25	7.25
18 X 4	28.5	19.25	9.5	2.25
18 X 6	32.5	21.25	9.5	3.25
18 X 8	36	23.75	9.5	4.25
18 X 10	39	26	9.5	5.25
18 X 12	42.5	28.5	9.5	6.25
18 X 15	46.5	31.25	9.5	7.25
18	51.75	35.25	9.5	9.5

SIZE	A	B	C	D
21 X 4	32	21.5	11	2.25
21 X 6	36	23.75	11	3.25
21 X 8	39.5	26	11	4.25
21 X 10	42.5	28.5	11	5.25
21 X 12	45.75	30.75	11	6.25
21 X 15	50.25	33.75	11	7.25
21 X 18	56.75	37.5	11	9.5
21	61.5	41.25	11	11
24 X 4	34	23.5	12.5	2.25
24 X 6	38	25.75	12.5	3.25
24 X 8	41.5	26.25	12.5	4.25
24 X 10	44.5	30.5	12.5	5.25
24 X 12	47.75	32.75	12.5	6.25
24 X 15	52.25	35.75	12.5	7.25
24 X 18	58.75	39.5	12.5	9.5
24 X 21	63.5	43.25	12.5	11
24	68.5	46	12.5	12.5
27 X 4	37	25.75	14	2.25
27 X 6	41	28	14	3.25
27 X 8	44.5	30.25	14	4.25
27 X 10	47.5	32.75	14	5.25
27 X 12	50.75	35	14	6.25
27 X 15	55.25	38	14	7.25
27 X 18	61.75	41.75	14	9.5
27 X 21	66.5	45.5	14	11
27 X 24.	71.5	48.25	14	12.5
27	77	51.5	14	14



**SPECIFIED
FITTINGS**

**164 WEST SMITH ROAD, PO BOX 28157
BELLINGHAM, WA 98228-0157**

**Toll-free telephone and fax
(888) 734-8846 (888) 734-8258 (F)
e-mail: sales@specfit.com**

**SIGNED DRAWINGS MUST ACCOMPANY PURCHASE ORDER OR
DIMENSIONS OF FITTINGS WILL NOT BE GUARANTEED**

SIZE	A	B	C	D
30 X 4	48.25	28.75	16	2.25
30 X 6	51.25	30.75	16	3.25
30 X 8	54.25	33.25	16	4.25
30 X 10	57.25	35.5	16	5.25
30 X 12	62	38	16	6.25
30 X 15	66	40.75	16	7.25
30 X 18	70.75	44.5	16	9.5
30 X 21	75.5	48.25	16	11
30 X 24	81.5	51	16	12.5
30 X 27	85.75	54.5	16	14
30	91.5	60.5	16	16
36 X 4	54.75	33	19	2.25
36 X 6	57.5	35.25	19	3.25
36 X 8	60.5	37.5	19	4.25
36 X 10	63.5	40	19	5.25
36 X 12	68.25	42.25	19	6.25
36 X 15	72.25	45.25	19	7.25
36 X 18	77.25	49	19	9.5
36 X 21	81.75	52.75	19	11
36 X 24	87.75	55.5	19	12.5
36 X 27	92.25	58.75	19	14
36 X 30	98	65	19	16
36				
42 X 4				
42 X 6				
42 X 8				
42 X 10				

SIZE	A	B	C	D
42 X 12				
42 X 15				
42 X 18				
42 X 21				
42 X 24				
42 X 27				
42 X 30				
42 X 36				
42				
48 X 4				
48 X 6				
48 X 8				
48 X 10				
48 X 12				
48 X 15				
48 X 18				
48 X 21				
48 X 24				
48 X 27				
48 X 30				
48 X 36				
48 X 42				
48				