

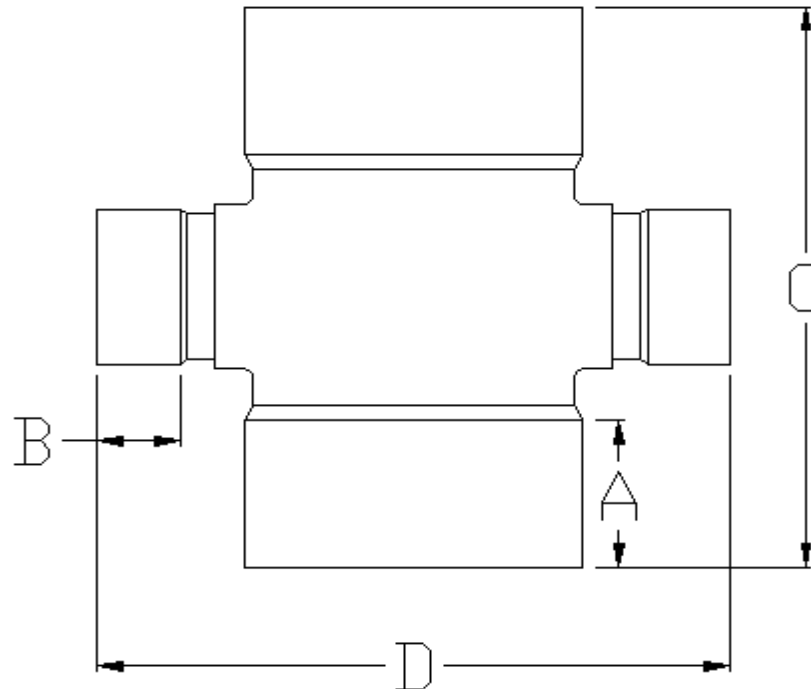


Specified Fittings, LLC

164 West Smith Road • PO Box 28157 • Bellingham, WA 98228-0157 | Email: sales@specfit.com

Bellingham: 360-398-7700 | 360-398-7051 Fax
Stevensville: 406-777-3466 | 406-777-7181 Fax
Mexico (Toll Free): 800-429-1705 | 800-574-1075 Fax

**SIGNED DRAWINGS MUST ACCOMPANY PURCHASE ORDER OR
DIMENSIONS OF FITTINGS WILL NOT BE GUARANTEED**



DISCLAIMER - PLEASE READ

- 1) All dimensions approximate, subject to change without notice
--Angle tolerance is +/- 2 degrees
--All other dimensions to +/- 1"
- 2) This drawing only applicable if a copy is referenced at time of order.
--Without a copy of drawing, fitting construction may differ from that shown.
- 3) Subject to Specified Fittings Standard Terms and Conditions.

Description: CROSS
Material: PVC SDR 35
Part #'s: 81260(4-48)
Configuration: ALL ENDS SOLVENT WELD

D.E.



**SPECIFIED
FITTINGS**

**164 WEST SMITH ROAD, PO BOX 28157
BELLINGHAM, WA 98228-0157**

**Toll-free telephone and fax
(888) 734-8846 (888) 734-8258 (F)
e-mail: sales@specfit.com**

SIZE	A	B	C	D
6 X 4	3.25	2.25	13	14.25
6	3.25	3.25	15	18.5
8 X 4	4.25	2.25	14.75	16.5
8 X 6	4.25	3.25	16.75	20.75
8	4.25	4.25	19	22.5
10 X 4	5.25	2.25	17	18.5
10 X 6	5.25	3.25	20.5	22.75
10 X 8	5.25	4.25	23	24.5
10	5.25	5.25	25.25	26.25
12 X 4	6.25	2.25	21.75	20.5
12 X 6	6.25	3.25	23.75	24.75
12 X 8	6.25	4.25	25	26.5
12 X 10	6.25	5.25	27	28.25
12	6.25	6.25	29	32
15 X 4	7.5	2.25	24.75	23.25
15 X 6	7.5	3.25	26.75	27.5
15 X 8	7.5	4.25	29	29.25
15 X 10	7.5	5.25	31	31
15 X 12	7.5	6.25	33	34.75
15	9.25	9.25	43.25	46.5
18 X 4	9.25	2.25	28.75	26.75
18 X 6	9.25	3.25	30.75	31
18 X 8	9.25	4.25	33	32.75
18 X 10	9.25	5.25	35	34.5
18 X 12	9.25	6.25	37	38.25
18 X 15	9.25	7.5	39.75	41
18	9.25	9.25	43.25	46.5

SIZE	A	B	C	D
21 X 4	11	2.25	32	30
21 X 6	11	3.25	34	34.25
21 X 8	11	4.25	36.25	36
21 X 10	11	5.25	38.25	37.75
21 X 12	11	6.25	40.25	41.5
21 X 15	11	7.5	43	44.25
21 X 18	11	9.25	46.5	49.75
21	11	11	49.75	52.5
24 X 4	12.25	2.25	35.25	32.75
24 X 6	12.25	3.25	37.25	37
24 X 8	12.25	4.25	37.5	38.75
24 X 10	12.25	5.25	39.5	40.5
24 X 12	12.25	6.25	41.5	44.25
24 X 15	12.25	7.5	44.25	47
24 X 18	12.25	9.25	47.75	52.5
24 X 21	12.25	11	51	55.25
24	12.25	12.25	53.75	58.25
27 X 4	14	2.25	38.25	36
27 X 6	14	3.25	39.25	40.25
27 X 8	14	4.25	41.5	42
27 X 10	14	5.25	43.5	43.75
27 X 12	14	6.25	45.5	47.5
27 X 15	14	7.5	48.25	50.25
27 X 18	14	9.25	51.75	55.75
27 X 21	14	11	55.25	58.5
27 X 24.	14	12.25	58	61.5
27	14	14	60.75	66.25