

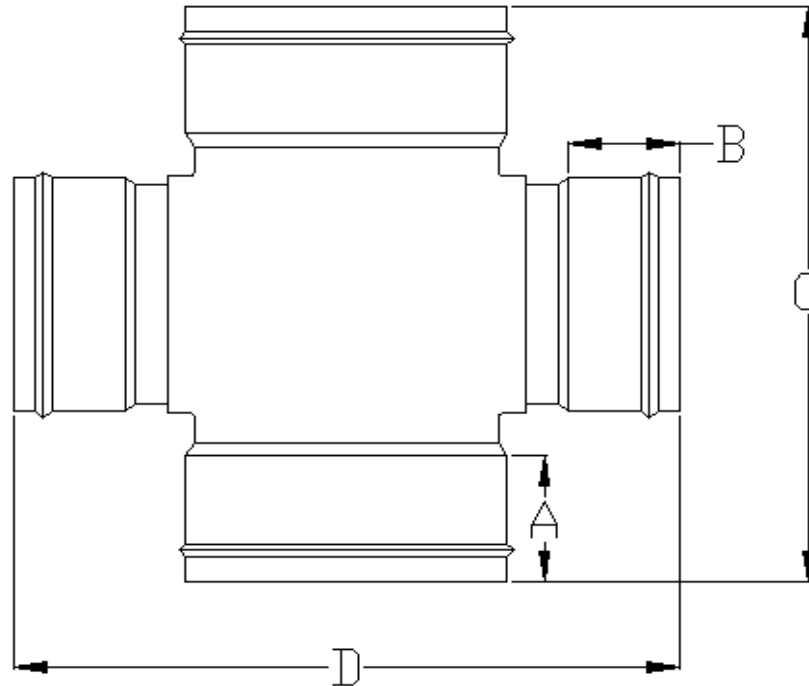


Specified Fittings, LLC

164 West Smith Road • PO Box 28157 • Bellingham, WA 98228-0157 | Email: sales@specfit.com

Bellingham: 360-398-7700 | 360-398-7051 Fax
Stevensville: 406-777-3466 | 406-777-7181 Fax
Mexico (Toll Free): 800-429-1705 | 800-574-1075 Fax

SIGNED DRAWINGS MUST ACCOMPANY PURCHASE ORDER OR DIMENSIONS OF FITTINGS WILL NOT BE GUARANTEED



DISCLAIMER - PLEASE READ

- 1) *All dimensions approximate, subject to change without notice*
 --Angle tolerance is +/- 2 degrees
 --All other dimensions to +/- 1"
- 2) *This drawing only applicable if a copy is referenced at time of order.*
 --Without a copy of drawing, fitting construction may differ from that shown.
- 3) *Subject to Specified Fittings Standard Terms and Conditions.*

Description: CROSS
 Material: PVC SDR 35
 Part #'s: 79260(6-27)
 Configuration: GASKET X GASKET X GASKET X GASKET

D.E.



**SPECIFIED
FITTINGS**

**164 WEST SMITH ROAD, PO BOX 28157
BELLINGHAM, WA 98228-0157**

**Toll-free telephone and fax
(888) 734-8846 (888) 734-8258 (F)
e-mail: sales@specfit.com**

SIZE	A	B	C	D
6 X 4	4	4.5	16	20.75
6	4	4	18	21
8 X 4	5	4.5	17.5	23
8 X 6	5	4	19.5	23.25
8	5	5	21.75	25.5
10 X 4	5.5	4.5	19.25	25
10 X 6	5.5	4	21.25	25.25
10 X 8	5.5	5	23.5	27.5
10	5.5	5.5	25.5	30.25
12 X 4	6.5	4.5	22	27
12 X 6	6.5	4	22.75	27.25
12 X 8	6.5	5	25	29.5
12 X 10	6.5	5.5	27	32.25
12	6.5	6.5	30.5	34
15 X 4	8.5	4.5	25	29.75
15 X 6	8.5	4	27	30
15 X 8	8.5	5	29.25	32.25
15 X 10	8.5	5.5	31.25	35
15 X 12	8.5	6.5	33.25	36.75
15	8.5	8.5	36.25	41.25
18 X 4	9.25	4.5	27.5	33.25
18 X 6	9.25	4	29.5	33.5
18 X 8	9.25	5	31.75	35.75
18 X 10	9.25	5.5	33.75	38.5
18 X 12	9.25	6.5	35.75	40.25
18 X 15	9.25	8.5	37.5	44.75
18	9.25	9.25	42.25	48.5

SIZE	A	B	C	D
21 X 4	10.25	4.5	33	36.5
21 X 6	10.25	4	35	36.75
21 X 8	10.25	5	37.25	39
21 X 10	10.25	5.5	39.25	41.75
21 X 12	10.25	6.5	41.25	43.5
21 X 15	10.25	8.5	44.25	48
21 X 18	10.25	9.25	47.75	51.75
21	10.25	10.25	51	55.25
24 X 4	11.5	4.5	35.75	39.25
24 X 6	11.5	4	37.75	39.5
24 X 8	11.5	5	40	41.75
24 X 10	11.5	5.5	42	44.5
24 X 12	11.5	6.5	44	46.25
24 X 15	11.5	8.5	47	50.75
24 X 18	11.5	9.25	50.5	54.5
24 X 21	11.5	10.25	53.75	58
24	11.5	11.5	61.25	60.25
27 X 4	12.5	4.5	39.25	42.5
27 X 6	12.5	4	41.25	42.75
27 X 8	12.5	5	43.5	45
27 X 10	12.5	5.5	45.5	47.75
27 X 12	12.5	6.5	47.5	49.5
27 X 15	12.5	8.5	50.5	54
27 X 18	12.5	9.25	54	57.75
27 X 21	12.5	10.25	57.25	61.25
27 X 24.	12.5	11.5	60	63.5
27	12.5	12.5	65.75	66.75