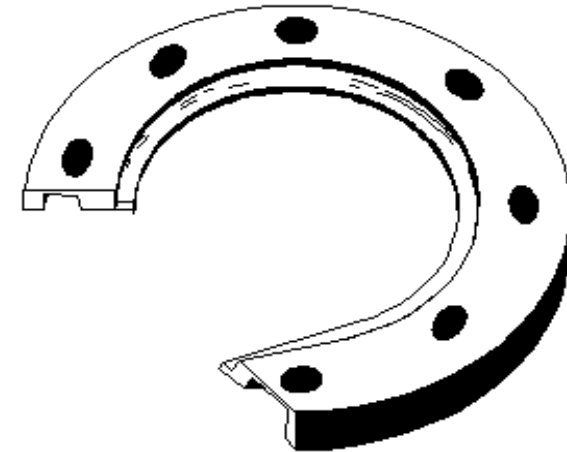
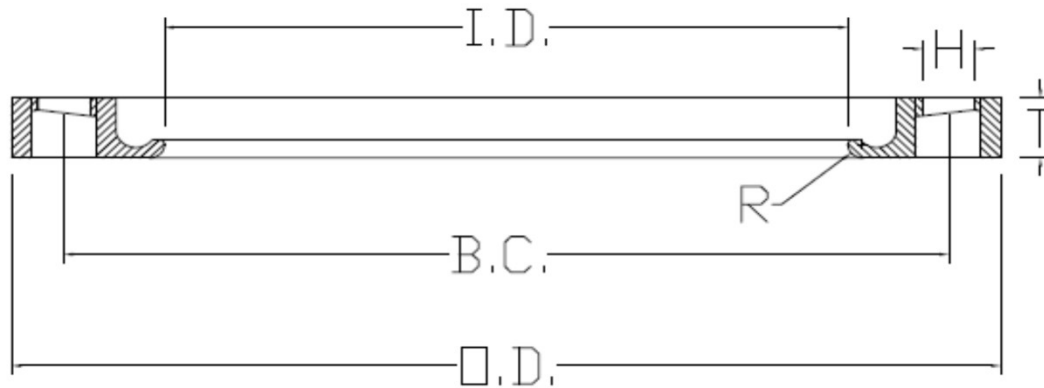


SPECIFIED FITTINGS, LLC

164 W. SMITH RD
 BELLINGHAM, WA 98226
 888-734-8846 (T)
 888-734-8258 (F)
spec@specfit.com

483 STEVENSVILLE AIRPORT RD.
 STEVENSVILLE, MT 59870
 406-777-3466 (T)
 406-777-7181 (F)
sales@specfit.com

www.specfit.com

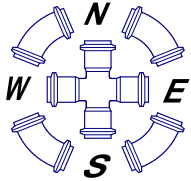


Description: DIPS PRIMER COATED DUCTILE IRON FLANGE RINGS
 Material: DUCTILE IRON
 Size: 4" - 24"
 CLASS 150, CLASS 200
 PSI RATINGS 150, 200

NOTE:

Fittings are manufactured and tested to the requirements of ASTM D3035, D3261, AWWA C901 or C906, and FM 1613. These fittings are tested to the requirements of ASTM D3261 and are compatible for heat fusion with any pipe and or fitting of compatible resin. Made from PE3408/3608 or PE4710 material. All raw material shall comply with NSF-61. Other OD's, SDR's and Pressure Ratings available upon request. Per FM 1613 and AWWA C906, the working pressure rating equals the pressure class with an allowance included in the WPR for pressure surge.

FOR DISCLAIMER REFER TO FM DIMENSION CATALOG.



SPECIFIED FITTINGS, LLC

**164 W. SMITH RD
BELLINGHAM, WA 98226**

888-734-8846 (T)

888-734-8258 (F)

spec@specfit.com

**483 STEVENSVILLE AIRPORT RD.
STEVENSVILLE, MT 59870**

406-777-3466 (T)

406-777-7181 (F)

sales@specfit.com

www.specfit.com

DIPS PRIMER COATED DUCTILE IRON FLANGE RING DIMENSION CHART

SIZE	O.D.	T	I.D.	BOLTS	H	B.C.	R	PRESSURE	
								CLASS	PART #
4"	9	0.94	4.9	8	0.75	7.5	0.44	150/200	BR4FM200PDIPS
6"	11	1	7.025	8	0.875	9.5	0.5	150/200	BR6FM200PDIPS
8"	13.5	1.12	9.175	8	0.875	11.75	0.5	150/200	BR8FM200PDIPS
10"	16	1.19	11.27	12	1	14.25	0.5	150/200	BR10FM200PDIPS
12"	19	1.25	13.4	12	1	17	0.5	150/200	BR12FM200PDIPS
14"	21	1.67	15.68	12	1.125	18.75	0.4	150/200	BR14FM200PDIPS
16"	23.5	1.77	17.78	16	1.125	21.25	0.4	150/200	BR16FM200PDIPS
18"	25	1.97	19.88	16	1.25	22.75	0.38	150/200	BR18FM200PDIPS
20"	27.5	2.13	21.98	20	1.25	25	0.31	150/200	BR20FM200PDIPS
24"	32	2.13	26.18	20	1.375	29.5	0.31	150/200	BR24FM200PDIPS