

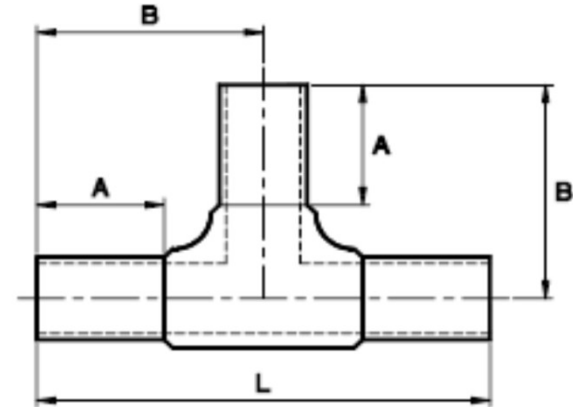
SPECIFIED FITTINGS, LLC

164 W. SMITH RD
 BELLINGHAM, WA 98226
 888-734-8846 (T)
 888-734-8258 (F)
spec@specfit.com

483 STEVENSVILLE AIRPORT RD.
 STEVENSVILLE, MT 59870
 406-777-3466 (T)
 406-777-7181 (F)
sales@specfit.com

www.spectit.com

SIZE	A	B	L	PRESSURE	
				CLASS	PART #
2"	2.88	5.13	10.25	150	MHD8202FM150
2"	2.88	5.13	10.25	200	MHD8202FM200
3"	3	5.72	11.44	150	MHD8203FM150
3"	3	6.06	12.13	200	MHD8203FM200
4"	3	6.75	13.5	150	MHD8204FM150
4"	3	6.22	12.44	200	MHD8204FM200
6"	4.06	8.31	16.62	150	MHD8206FM150
6"	4.25	8.63	17.25	200	MHD8206FM200
8"	6	12.09	24.18	150	MHD8208FM150
8'	6	12.09	24.18	200	MHD8208FM200



Description: IPS HDPE MOLDED TEES
 PLAIN-ENDS
 Material: HDPE
 Size: 2"-8"
 CLASS 150, CLASS 200
 PSI RATINGS 150, 200

NOTE:

Molded fittings are manufactured and tested to the requirements of ASTM D3035, D3261, AWWA C901 or C906, and FM 1613. These fittings are tested to the requirements of ASTM D3261 and are compatible for heat fusion with any pipe and or fitting of compatible resin. Made from PE3408/3608 or PE4710 material. All raw material shall comply with NSF-61. Other OD's, SDR's and Pressure Ratings available upon request. Per FM 1613 and AWWA C906, the working pressure rating equals the pressure class with an allowance included in the WPR for pressure surge.

FOR DISCLAIMER REFER TO FM DIMENSION CATALOG.