



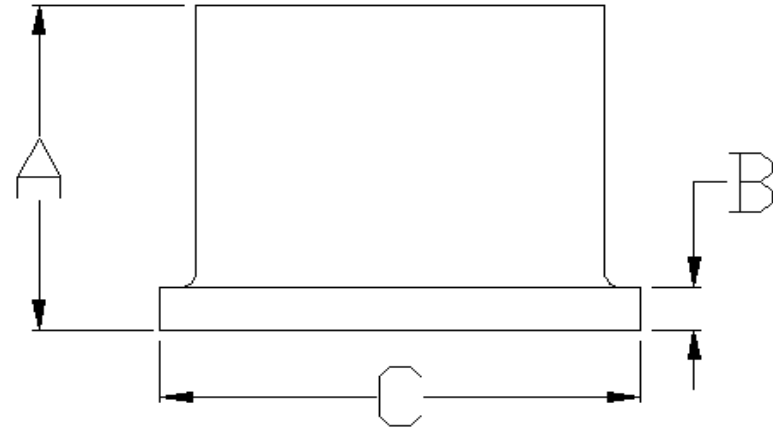
Specified Fittings, LLC

164 West Smith Road • PO Box 28157 • Bellingham, WA 98228-0157 | Email: sales@specfit.com

Bellingham: 360-398-7700 | 360-398-7051 Fax
Stevensville: 406-777-3466 | 406-777-7181 Fax
Mexico (Toll Free): 800-429-1705 | 800-574-1075 Fax



SIZE	A	B	C	PRESSURE	PART #
				CLASS	
4"	6	0.68	6.56	150	MHD5204FM150DIPS
4"	6	0.68	6.56	200	MHD5204FM200DIPS
6"	8	1.08	8.6	150	MHD5206FM150DIPS
6"	8	1.08	8.6	200	MHD5206FM200DIPS
8"	9	1.38	10.72	150	MHD5208FM150DIPS
8"	9	1.38	10.72	200	MHD5208FM200DIPS
10"	9	1.88	13.17	150	MHD52010FM150DIPS
10"	9	1.88	13.17	200	MHD52010FM200DIPS
12"	11	2.13	15.97	150	MHD52012FM150DIPS
12"	11	2.13	15.97	200	MHD52012FM200DIPS
14"	12	2.25	17.4	150	MHD52014FM150DIPS
14"	12	2.25	17.4	200	MHD52014FM200DIPS
16"	11.5	2.88	19.9	150	MHD52016FM150DIPS
16"	11.5	2.88	19.9	200	MHD52016FM200DIPS
20"	11.5	3.63	23.66	150	MHD52020FM150DIPS
20"	11.5	3.63	23.66	200	MHD52020FM200DIPS
24"	11.5	4.13	27.9	150	MHD52024FM150DIPS
24"	11.5	4.13	27.9	200	MHD52024FM200DIPS



Description: DIPS HDPE MOLDED FLANGE ADAPTER PLAIN-END
Material: HDPE
Size: 4" - 24"
CLASS 150, CLASS 200
PSI RATINGS 150, 200

Version 1.3, Copyright 2013

NOTE:

Molded fittings are manufactured and tested to the requirements of ASTM D3035, D3261, AWWA C901 or C906, and FM 1613. These fittings are tested to the requirements of ASTM D3261 and are compatible for heat fusion with any pipe and or fitting of compatible resin. Made from PE3408/3608 or PE4710 material. All raw material shall comply with NSF-61. Other OD's, SDR's and Pressure Ratings available upon request. Per FM 1613 and AWWA C906, the working pressure rating equals the pressure class with an allowance included in the WPR for pressure surge. FOR DISCLAIMER REFER TO FM DIMENSION CATALOG.