

# SPECIFIED FITTINGS, LLC

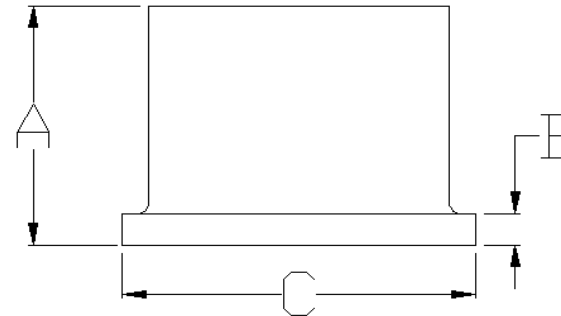
164 W. SMITH RD  
 BELLINGHAM, WA 98226  
 888-734-8846 (T)  
 888-734-8258 (F)  
[spec@specfit.com](mailto:spec@specfit.com)

483 STEVENSVILLE AIRPORT RD.  
 STEVENSVILLE, MT 59870  
 406-777-3466 (T)  
 406-777-7181 (F)  
[sales@specfit.com](mailto:sales@specfit.com)

[www.specfit.com](http://www.specfit.com)

SIZE	A	B	C	PRESSURE	
				CLASS	PART #
2"	5.91	0.39	3.94	150	HD5202FM150
2"	6.06	0.4	3.94	200	HD5202FM200
3"	6.06	0.63	5	150	HD5203FM150
3"	6.06	0.6	4.65	200	HD5203FM200
4"	6.06	0.75	6.02	150	HD5204FM150
4"	6.38	0.8	6.02	200	HD5204FM200
6"	7.95	0.98	8.58	150	HD5206FM150
6"	7.99	1.1	8.58	200	HD5206FM200
8"	9.29	1.02	10.63	150	HD5208FM150
8"	9.33	1.4	10.63	200	HD5208FM200
10"	9.02	1.38	12.52	150	HD52010FM150
10"	9.06	1.7	12.52	200	HD52010FM200
12"	12	1.61	15	150	HD52012FM150
12"	12	2.1	15.04	200	HD52012FM200

SIZE	A	B	C	PRESSURE	
				CLASS	PART #
14"	12	1.67	17.13	150	HD52014FM150
14"	12	2.3	17.13	200	HD52014FM200
16"	12	1.89	19.25	150	HD52016FM150
16"	12	2.6	19.25	200	HD52016FM200
18"	12	2.03	21.26	150	HD52018FM150
18"	12	2.5	21.26	200	HD52018FM200
20"	12	2.3	22.91	150	HD52020FM150
20"	12	2.78	22.91	200	HD52020FM200
22"	12	2.5	25.6	150	HD52022FM150
22"	12	3.92	25.6	200	HD52022FM200
24"	12	2.9	27.26	150	HD52024FM150
24"	12	3.33	27.25	200	HD52024FM200



Description: IPS HDPE MOLDED FLANGE ADAPTER PLAIN-END  
 Material: HDPE  
 Size: 2" - 24"  
 CLASS 150, CLASS 200  
 PSI RATINGS 150, 200

Molded fittings are manufactured and tested to the requirements of ASTM D3035, D3261, AWWA C901 or C906, and FM 1613. These fittings are tested to the requirements of ASTM D3261 and are compatible for heat fusion with any pipe and or fitting of compatible resin. Made from PE3408/3608 or PE4710 material. All raw material shall comply with NSF-61. Other OD's, SDR's and Pressure Ratings available upon request. Per FM 1613 and AWWA C906, the working pressure rating equals the pressure class with an allowance included in the WPR for pressure surge.  
 FOR DISCLAIMER REFER TO FM DIMENSION CATALOG.