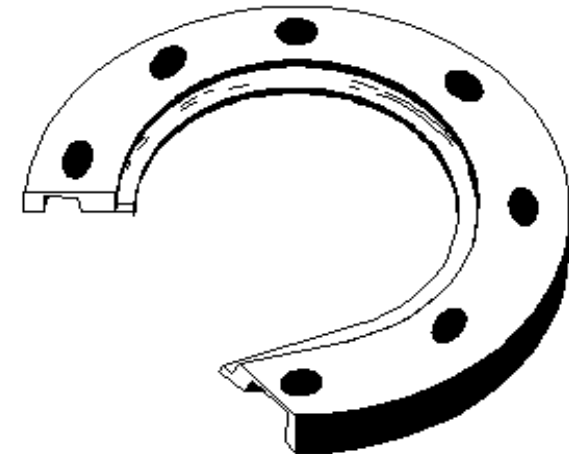
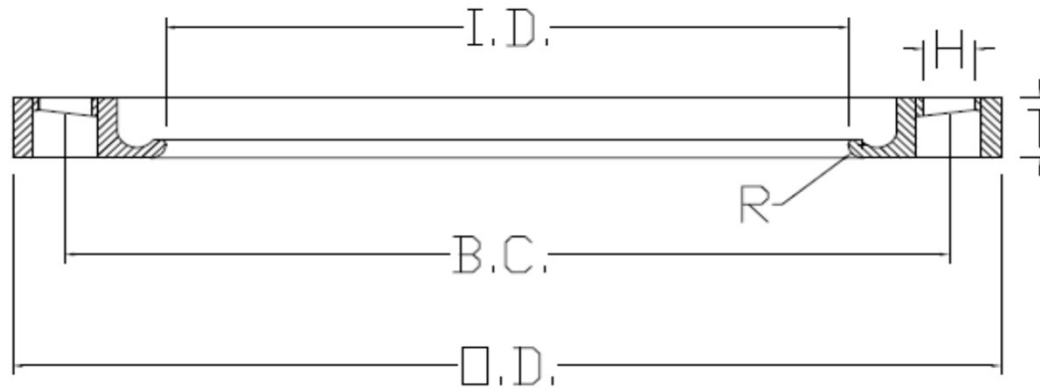


## SPECIFIED FITTINGS, LLC

164 W. SMITH RD  
 BELLINGHAM, WA 98226  
 888-734-8846 (T)  
 888-734-8258 (F)  
[spec@specfit.com](mailto:spec@specfit.com)

483 STEVENSVILLE AIRPORT RD.  
 STEVENSVILLE, MT 59870  
 406-777-3466 (T)  
 406-777-7181 (F)  
[sales@specfit.com](mailto:sales@specfit.com)

[www.specfit.com](http://www.specfit.com)

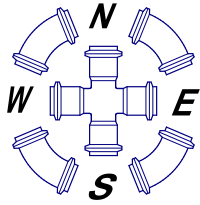


Description: DIPS 316 STAINLESS STEEL  
 FLANGE RINGS  
 Material: 316 STAINLESS STEEL  
 Size: 4" - 24"  
 CLASS 150, CLASS 200  
 PSI RATINGS 150, 200

**NOTE:**

Fittings are manufactured and tested to the requirements of ASTM D3035, D3261, AWWA C901 or C906, and FM 1613. These fittings are tested to the requirements of ASTM D3261 and are compatible for heat fusion with any pipe and or fitting of compatible resin. Made from PE3408/3608 or PE4710 material. All raw material shall comply with NSF-61. Other OD's, SDR's and Pressure Ratings available upon request. Per FM 1613 and AWWA C906, the working pressure rating equals the pressure class with an allowance included in the WPR for pressure surge.

FOR DISCLAIMER REFER TO FM DIMENSION CATALOG.



# **SPECIFIED FITTINGS, LLC**

**164 W. SMITH RD  
BELLINGHAM, WA 98226**

**888-734-8846 (T)**

**888-734-8258 (F)**

[spec@specfit.com](mailto:spec@specfit.com)

**483 STEVENSVILLE AIRPORT RD.**

**STEVENSVILLE, MT 59870**

**406-777-3466 (T)**

**406-777-7181 (F)**

[sales@specfit.com](mailto:sales@specfit.com)

[www.specfit.com](http://www.specfit.com)

## DIPS 316 STAINLESS STEEL FLANGE RING DIMENSION CHART

SIZE	O.D.	T	I.D.	BOLTS	H	B.C.	R	PRESSURE	PART #
								CLASS	
4"	9	0.94	4.9	8	0.75	7.5	0.39	150/200	BR4FM2006SSDIPS
6"	11	1	7	8	0.88	9.5	0.44	150/200	BR6FM2006SSDIPS
8"	13.5	1.12	9.13	8	0.88	11.75	0.44	150/200	BR8FM2006SSDIPS
10"	16	1.19	11.25	12	1	14.25	0.42	150/200	BR10FM2006SSDIPS
12"	19	1.25	13.37	12	1	17	0.42	150/200	BR12FM2006SSDIPS
14"	21	1.38	15.48	12	1.13	18.75	0.5	150	BR14FM1506SSDIPS
14"	21	1.78	15.48	12	1.13	18.75	0.41	200	BR14FM2006SSDIPS
16"	23.5	1.44	17.59	16	1.13	21.25	0.5	150	BR16FM1506SSDIPS
16"	23.5	2.17	17.59	16	1.13	21.25	0.4	200	BR16FM2006SSDIPS
18"	25	1.56	19.7	16	1.25	22.75	0.5	150	BR18FM1506SSDIPS
18"	25	2.06	19.7	16	1.25	22.75	0.4	200	BR18FM2006SSDIPS
20"	27.5	1.69	21.85	20	1.25	25	0.5	150	BR20FM1506SSDIPS
20"	27.5	2.27	21.85	20	1.25	25	0.31	200	BR20FM2006SSDIPS
24"	32	1.88	26.05	20	1.38	29.5	0.5	150	BR24FM1506SSDIPS
24"	32	2.6	26.05	20	1.38	29.5	0.31	200	BR24FM2006SSDIPS