



Specified Fittings, LLC

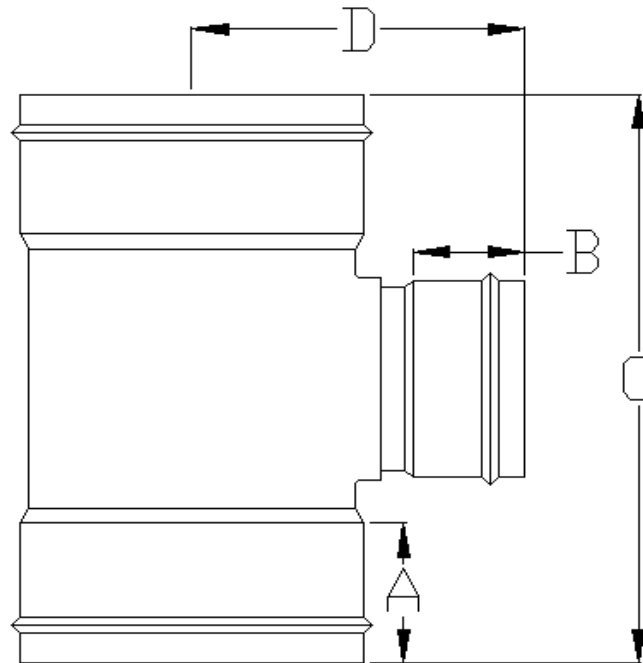
164 West Smith Road • PO Box 28157 • Bellingham, WA 98228-0157 | Email: sales@specfit.com

Bellingham: 360-398-7700 | 360-398-7051 Fax

Stevensville: 406-777-3466 | 406-777-7181 Fax

Mexico (Toll Free): 800-429-1705 | 800-574-1075 Fax

**SIGNED DRAWINGS MUST ACCOMPANY PURCHASE ORDER OR
DIMENSIONS OF FITTINGS WILL NOT BE GUARANTEED**



DISCLAIMER - PLEASE READ

- 1) All dimensions approximate, subject to change without notice
--Angle tolerance is +/- 2 degrees
--All other dimensions to +/- 1"
- 2) This drawing only applicable if a copy is referenced at time of order.
--Without a copy of drawing, fitting construction may differ from that shown.
- 3) Subject to Specified Fittings Standard Terms and Conditions.

Description: TEE
Material: PVC SDR 35
Part #'s: 79820(6-27)
Configuration: GASKET X GASKET X GASKET

D.E.



**SPECIFIED
FITTINGS**

**164 WEST SMITH ROAD, PO BOX 28157
BELLINGHAM, WA 98228-0157**

**Toll-free telephone and fax
(888) 734-8846 (888) 734-8258 (F)
e-mail: sales@specfit.com**

**SIGNED DRAWINGS MUST ACCOMPANY PURCHASE ORDER OR
DIMENSIONS OF FITTINGS WILL NOT BE GUARANTEED**

SIZE	A	B	C	D
6 X 4	4	4.5	16	10.5
6	4	4	18	10.5
8 X 4	5	4.5	17.5	11.5
8 X 6	5	4	19.5	11.5
8	5	5	21.75	12.75
10 X 4	5.5	4.5	19.25	12.5
10 X 6	5.5	4	21.25	12.75
10 X 8	5.5	5	23.5	13.75
10	5.5	5.5	25.5	15.25
12 X 4	6.5	4.5	22	13.5
12 X 6	6.5	4	22.75	13.75
12 X 8	6.5	5	25	14.75
12 X 10	6.5	5.5	27	16.25
12	6.5	6.5	30.5	17
15 X 4	8.5	4.5	25	15
15 X 6	8.5	4	27	15
15 X 8	8.5	5	29.25	16.25
15 X 10	8.5	5.5	31.25	17.5
15 X 12	8.5	6.5	33.25	18.5
15	8.5	8.5	36.25	20.75
18 X 4	9.25	4.5	27.5	16.5
18 X 6	9.25	4	29.5	16.75
18 X 8	9.25	5	31.75	17.75
18 X 10	9.25	5.5	33.75	19.25
18 X 12	9.25	6.5	35.75	20
18 X 15	9.25	8.5	37.5	22.25
18	9.25	9.25	42.25	24.25

SIZE	A	B	C	D
21 X 4	10.25	4.5	33	18.25
21 X 6	10.25	4	35	18.5
21 X 8	10.25	5	37.25	19.5
21 X 10	10.25	5.5	39.25	21
21 X 12	10.25	6.5	41.25	21.75
21 X 15	10.25	8.5	44.25	24
21 X 18	10.25	9.25	47.75	26
21	10.25	10.25	51	27.75
24 X 4	11.5	4.5	35.75	19.75
24 X 6	11.5	4	37.75	19.75
24 X 8	11.5	5	40	21
24 X 10	11.5	5.5	42	22.25
24 X 12	11.5	6.5	44	23.25
24 X 15	11.5	8.5	47	25.25
24 X 18	11.5	9.25	50.5	27.25
24 X 21	11.5	10.25	53.75	29
24	11.5	11.5	61.25	30.25
27 X 4	12.5	4.5	39.25	21.25
27 X 6	12.5	4	41.25	21.25
27 X 8	12.5	5	43.5	22.5
27 X 10	12.5	5.5	45.5	23.75
27 X 12	12.5	6.5	47.5	24.75
27 X 15	12.5	8.5	50.5	27
27 X 18	12.5	9.25	54	28.75
27 X 21	12.5	10.25	57.25	30.5
27 X 24	12.5	11.5	60	31.75
27	12.5	12.5	65.75	33.25

D.E.