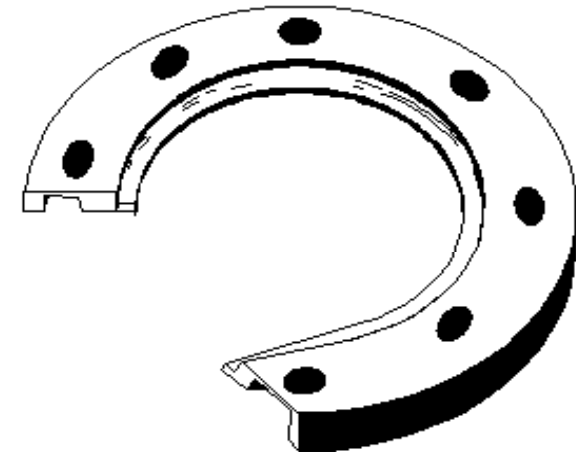
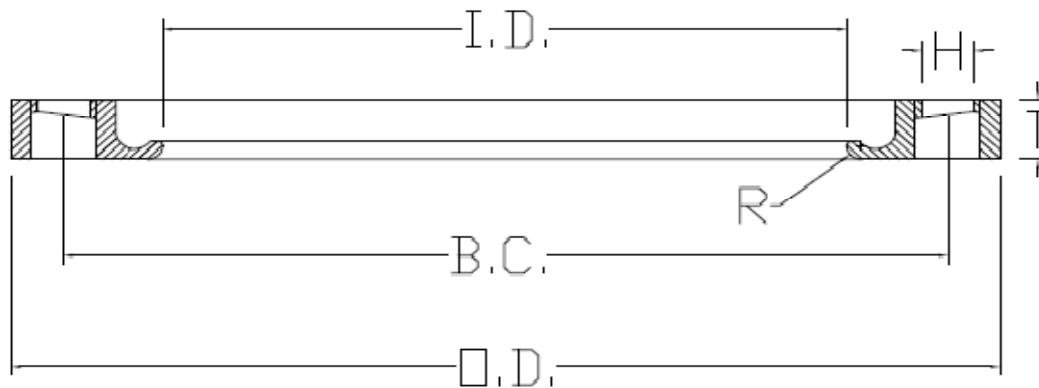




Specified Fittings, LLC

164 West Smith Road • PO Box 28157 • Bellingham, WA 98228-0157 | Email: sales@specfit.com

Bellingham: 360-398-7700 | 360-398-7051 Fax
Stevensville: 406-777-3466 | 406-777-7181 Fax
Mexico (Toll Free): 800-429-1705 | 800-574-1075 Fax

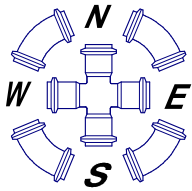


Description:	IPS PRIMER COATED DUCTILE IRON FLANGE RINGS
Material:	DUCTILE IRON
Size:	2" - 24" CLASS 150, CLASS 200
PSI RATINGS	150, 200

Version 1.3, Copyright 2013

NOTE:

Fittings are manufactured and tested to the requirements of ASTM D3035, D3261, AWWA C901 or C906, and FM 1613. These fittings are tested to the requirements of ASTM D3261 and are compatible for heat fusion with any pipe and or fitting of compatible resin. Made from PE3408/3608 or PE4710 material. All raw material shall comply with NSF-61. Other OD's, SDR's and Pressure Ratings available upon request. Per FM 1613 and AWWA C906, the working pressure rating equals the pressure class with an allowance included in the WPR for pressure surge.
FOR DISCLAIMER REFER TO FM DIMENSION CATALOG.



SPECIFIED FITTINGS, INC

164 W. SMITH RD
BELLINGHAM, WA 98226
888-734-8846 (T)
888-734-8258 (F)
spec@specfit.com

483 STEVENSVILLE AIRPORT RD.
STEVENSVILLE, MT 59870
406-777-3466 (T)
406-777-7181 (F)
sales@specfit.com

www.specfit.com

IPS PRIMER COATED DUCTILE IRON FLANGE RING DIMENSION CHART

SIZE	O.D.	T	I.D.	BOLTS	H	B.C.	R	PRESSURE	PART #
								CLASS	
2"	6	0.75	2.46	4	0.75	4.75	0.31	150/200	BR2FM200P
3"	7.5	0.94	3.6	4	0.75	6	0.4	150/200	BR3FM200P
4"	9	0.94	4.6	8	0.75	7.5	0.4	150/200	BR4FM200P
5"	10	0.94	5.69	8	0.875	8.5	0.44	150/200	BR5FM200P
6"	11	1	6.75	8	0.875	9.5	0.4	150/200	BR6FM200P
8"	13.5	1.12	8.75	8	0.875	11.75	0.4	150/200	BR8FM200P
10"	16	1.19	10.92	12	1	14.25	0.4	150/200	BR10FM200P
12"	19	1.5	12.92	12	1	17	0.4	150/200	BR12FM200P
14"	21	1.38	14.38	12	1.125	18.75	0.31	150	BR14FM150P
14"	21	1.63	14.18	12	1.125	18.75	0.4	200	BR14FM200P
16"	23.5	1.65	16.38	16	1.125	21.25	0.35	150	BR16FM150P
16"	23.5	1.88	16.19	16	1.125	21.25	0.4	200	BR16FM200P
18"	25	1.67	18.38	16	1.25	22.75	0.35	150	BR18FM150P
18"	25	1.75	18.2	16	1.25	22.75	0.4	200	BR18FM200P
20"	27.5	1.81	20.375	20	1.25	25	0.4	150	BR20FM150P
20"	27.5	2.125	20.375	20	1.25	25	0.31	200	BR20FM200P
22"	29.5	2	22.375	20	1.375	27.25	0.37	150	BR22FM150P
22"	29.5	2.3	22.375	20	1.375	27.25	0.31	200	BR22FM200P
24"	32	2.17	24.375	20	1.375	29.5	0.4	150	BR24FM150P
24"	32	2.5	24.375	20	1.375	29.5	0.31	200	BR24FM200P