



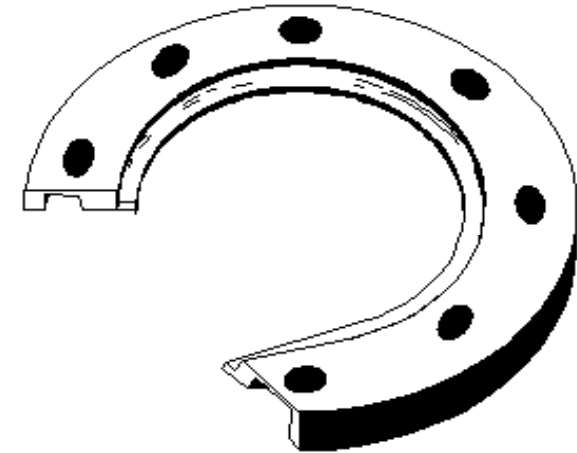
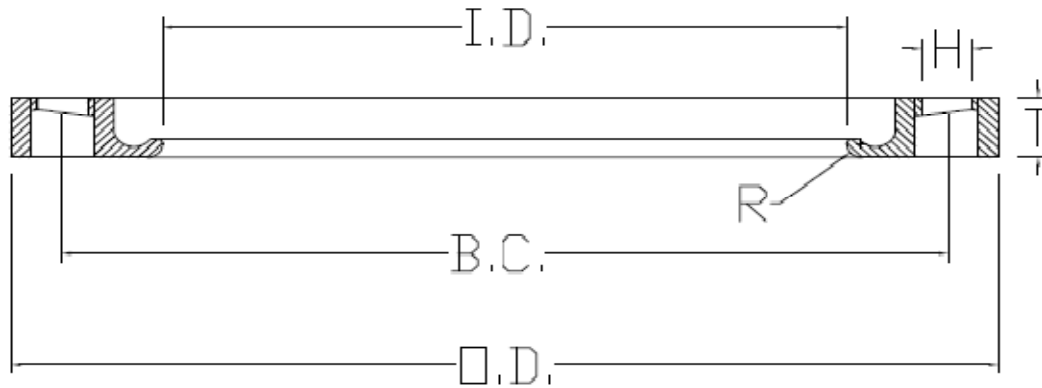
# Specified Fittings, LLC

164 West Smith Road • PO Box 28157 • Bellingham, WA 98228-0157 | Email: sales@specfit.com

Bellingham: 360-398-7700 | 360-398-7051 Fax

Stevensville: 406-777-3466 | 406-777-7181 Fax

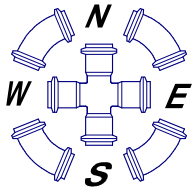
Mexico (Toll Free): 800-429-1705 | 800-574-1075 Fax



Description: DIPS EPOXY COATED DUCTILE IRON FLANGE RINGS  
 Material: DUCTILE IRON  
 Size: 4" - 24"  
 CLASS 150, CLASS 200  
 PSI RATINGS 150, 200

**NOTE:**

Fittings are manufactured and tested to the requirements of ASTM D3035, D3261, AWWA C901 or C906, and FM 1613. These fittings are tested to the requirements of ASTM D3261 and are compatible for heat fusion with any pipe and or fitting of compatible resin. Made from PE3408/3608 or PE4710 material. All raw material shall comply with NSF-61. Other OD's, SDR's and Pressure Ratings available upon request. Per FM 1613 and AWWA C906, the working pressure rating equals the pressure class with an allowance included in the WPR for pressure surge. FOR DISCLAIMER REFER TO FM DIMENSION CATALOG.



# **SPECIFIED FITTINGS, INC**

**164 W. SMITH RD**  
**BELLINGHAM, WA 98226**  
**888-734-8846 (T)**  
**888-734-8258 (F)**  
[spec@specfit.com](mailto:spec@specfit.com)

**483 STEVENSVILLE AIRPORT RD.**  
**STEVENSVILLE, MT 59870**  
**406-777-3466 (T)**  
**406-777-7181 (F)**  
[sales@specfit.com](mailto:sales@specfit.com)

[www.specfit.com](http://www.specfit.com)

## DIPS EPOXY COATED DUCTILE IRON FLANGE RING DIMENSION CHART

SIZE	O.D.	T	I.D.	BOLTS	H	B.C.	R	PRESSURE	PART #
								CLASS	
4"	9	0.94	4.9	8	0.75	7.5	0.44	150/200	BR4FM200DIPS
6"	11	1	7	8	0.875	9.5	0.5	150/200	BR6FM200DIPS
8"	13.5	1.12	9.13	8	0.875	11.75	0.5	150/200	BR8FM200DIPS
10"	16	1.19	11.25	12	1	14.25	0.5	150/200	BR10FM200DIPS
12"	19	1.5	13.37	12	1	17	0.5	150/200	BR12FM200DIPS
14"	21	1.63	15.48	12	1.125	18.75	0.5	150/200	BR14FM200DIPS
16"	23.5	1.88	17.59	16	1.125	21.25	0.5	150/200	BR16FM200DIPS
18"	25	1.75	19.7	16	1.25	22.75	0.5	150/200	BR18FM200DIPS
20"	27.5	2.06	21.85	20	1.25	25	0.5	150/200	BR20FM200DIPS
24"	32	2.13	26.05	20	1.375	29.5	0.5	150/200	BR24FM200DIPS