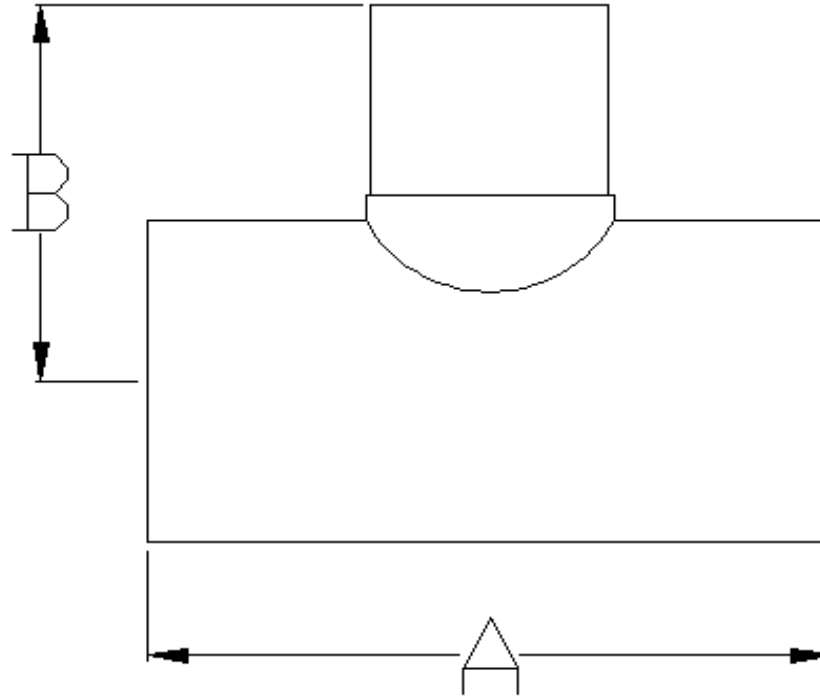




Specified Fittings, LLC

164 West Smith Road • PO Box 28157 • Bellingham, WA 98228-0157 | Email: sales@specfit.com

Bellingham: 360-398-7700 | 360-398-7051 Fax
Stevensville: 406-777-3466 | 406-777-7181 Fax
Mexico (Toll Free): 800-429-1705 | 800-574-1075 Fax

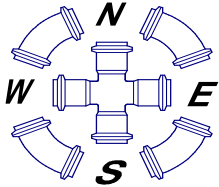


Description: DIPS HDPE FABRICATED REDUCING TEE
PLAIN-ENDS
Material: HDPE
Size: 6"-24"
CLASS 150, CLASS 200
PSI RATINGS 150, 200

Version 1.3, Copyright 2013

NOTE:

Fittings are manufactured and tested to the requirements of ASTM D3035, D3261, AWWA C901 or C906, and FM 1613. These fittings are tested to the requirements of ASTM D3261 and are compatible for heat fusion with any pipe and or fitting of compatible resin. Made from PE3408/3608 or PE4710 material. All raw material shall comply with NSF-61. Other OD's, SDR's and Pressure Ratings available upon request. Per FM 1613 and AWWA C906, the working pressure rating equals the pressure class with an allowance included in the WPR for pressure surge.
FOR DISCLAIMER REFER TO FM DIMENSION CATALOG.



SPECIFIED FITTINGS, INC

164 W. SMITH RD
 BELLINGHAM, WA 98226
 888-734-8846 (T)
 888-734-8258 (F)
spec@specfit.com

483 STEVENSVILLE AIRPORT RD.
 STEVENSVILLE, MT 59870
 406-777-3466 (T)
 406-777-7181 (F)
sales@specfit.com

www.specfit.com

DIPS HDPE FABRICATED REDUCING TEE DIMENSION CHART

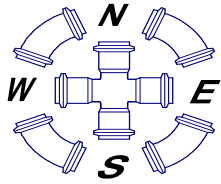
SIZE	6X4	6X4	8X4	8X4	8X6	8X6	10X4	10X4
A	17	17	18	18	23.5	23.5	18	18
B	9.5	9.5	10.5	10.5	21	21	11.5	11.5
PRESSURE CLASS	150	200	150	200	150	200	150	200
PART #	HD82064FM150DIPS	HD82064FM200DIPS	HD82084FM150DIPS	HD82084FM200DIPS	HD82086FM150DIPS	HD82086FM200DIPS	HD820104FM150DIPS	HD820104FM200DIPS

SIZE	10X6	10X6	10X8	10X8	12X4	12X4	12X6	12X6
A	20	20	26.25	26.25	21	21	23	23
B	13.5	13.5	26	26	12.5	12.5	14.5	14.5
PRESSURE CLASS	150	200	150	200	150	200	150	200
PART #	HD820106FM150DIPS	HD820106FM200DIPS	HD820108FM150DIPS	HD820108FM200DIPS	HD820124FM150DIPS	HD820124FM200DIPS	HD820126FM150DIPS	HD820126FM200DIPS

SIZE	12X8	12X8	12X10	12X10	14X4	14X4	14X6	14X6
A	25	25	31.25	31.25	21	21	23	23
B	15	15	25.5	25.5	13	13	15	15
PRESSURE CLASS	150	200	150	200	150	200	150	200
PART #	HD820128FM150DIPS	HD820128FM200DIPS	HD8201210FM150DIPS	HD8201210FM200DIPS	HD820144FM150DIPS	HD820144FM200DIPS	HD820146FM150DIPS	HD820146FM200DIPS

SIZE	14X8	14X8	14X10	14X10	14X12	14X12	16X4	16X4
A	25	25	32.5	32.5	32.5	32.5	21	21
B	15.5	15.5	28.25	28.25	29.25	29.25	15	14
PRESSURE CLASS	150	200	150	200	150	200	150	200
PART #	HD820148FM150DIPS	HD820148FM200DIPS	HD8201410FM150DIPS	HD8201410FM200DIPS	HD8201412FM150DIPS	HD8201412FM200DIPS	HD820164FM150DIPS	HD820164FM200DIPS

SIZE	16X6	16X6	16X8	16X8	16X10	16X10	16X12	16X12
A	23	23	25	25	28.75	28.75	34.5	34.5
B	16	16	16.5	16.5	16.5	16.5	34	34
PRESSURE CLASS	150	200	150	200	150	200	150	200
PART #	HD820166FM150DIPS	HD820166FM200DIPS	HD820168FM150DIPS	HD820168FM200DIPS	HD8201610FM150DIPS	HD8201610FM200DIPS	HD8201612FM150DIPS	HD8201612FM200DIPS



SPECIFIED FITTINGS, INC

164 W. SMITH RD
BELLINGHAM, WA 98226
888-734-8846 (T)
888-734-8258 (F)
spec@specfit.com

483 STEVENSVILLE AIRPORT RD.
STEVENSVILLE, MT 59870
406-777-3466 (T)
406-777-7181 (F)
sales@specfit.com

www.specfit.com

DIPS HDPE FABRICATED REDUCING TEE DIMENSION CHART

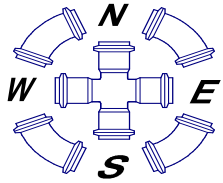
SIZE	16X14	16X14	18X4	18X4	18X6	18X6	18X8	18X8
A	34.5	34.5	21	21	23	23	25	25
B	32	32	15	15	17	17	17.5	17.5
PRESSURE CLASS	150	200	150	200	150	200	150	200
PART #	HD8201614FM150DIPS	HD8201614FM200DIPS	HD820184FM150DIPS	HD820184FM200DIPS	HD820186FM150DIPS	HD820186FM200DIPS	HD820188FM150DIPS	HD820188FM200DIPS

SIZE	18X10	18X10	18X12	18X12	18X14	18X14	18X16	18X16
A	30.75	30.75	32.75	32.75	36.5	36.5	36.5	36.5
B	17.5	17.5	19	19	32	32	30	30
PRESSURE CLASS	150	200	150	200	150	200	150	200
PART #	HD8201810FM150DIPS	HD8201810FM200DIPS	HD8201812FM150DIPS	HD8201812FM200DIPS	HD8201814FM150DIPS	HD8201814FM200DIPS	HD8201816FM150DIPS	HD8201816FM200DIPS

SIZE	20x4	20x4	20x6	20x6	20x8	20x8	20x10	20x10
A	29	29	31	31	33.5	33.5	36	36
B	16.75	16.75	18.75	18.75	19.25	19.25	19.25	19.25
PRESSURE CLASS	150	200	150	200	150	200	150	200
PART #	HD820204FM150DIPS	HD820204FM200DIPS	HD820206FM150DIPS	HD820206FM200DIPS	HD820208FM150DIPS	HD820208FM200DIPS	HD8202010FM150DIPS	HD8202010FM200DIPS

SIZE	20x12	20x12	20x14	20x14	20x16	20x16	20x18	20x18
A	38	38	38.5	38.5	38.5	38.5	38.5	38.5
B	20.75	20.75	37.75	37.75	36	36	35	35
PRESSURE CLASS	150	200	150	200	150	200	150	200
PART #	HD8202012FM150DIPS	HD8202012FM200DIPS	HD8202014FM150DIPS	HD8202014FM200DIPS	HD8202016FM150DIPS	HD8202016FM200DIPS	HD8202018FM150DIPS	HD8202018FM200DIPS

SIZE	24x4	24x4	24x6	24x6	24x8	24x8	24x10	24x10
A	29	29	31	31	33.5	33.5	36	36
B	19	19	21	21	21.5	21.5	21.5	21.5
PRESSURE CLASS	150	200	150	200	150	200	150	200
PART #	HD820244FM150DIPS	HD820244FM200DIPS	HD820246FM150DIPS	HD820246FM200DIPS	HD820248FM150DIPS	HD820248FM200DIPS	HD8202410FM150DIPS	HD8202410FM200DIPS



SPECIFIED FITTINGS, INC

164 W. SMITH RD
BELLINGHAM, WA 98226
888-734-8846 (T)
888-734-8258 (F)
spec@specfit.com

483 STEVENSVILLE AIRPORT RD.
STEVENSVILLE, MT 59870
406-777-3466 (T)
406-777-7181 (F)
sales@specfit.com

www.specfit.com

DIPS HDPE FABRICATED REDUCING TEE DIMENSION CHART

SIZE	24x12	24x12	24x14	24x14	24x16	24x16	24x18	24x18
A	38	38	44	56	44	56	44	56
B	23	23	44.5	50.5	42.75	48.75	40.75	47
PRESSURE CLASS	150	200	150	200	150	200	150	200
PART #	HD8202412FM150DIPS	HD8202412FM200DIPS	HD8202414FM150DIPS	HD8202414FM200DIPS	HD8202416FM150DIPS	HD8202416FM200DIPS	HD8202418FM150DIPS	HD8202418FM200DIPS

SIZE	24x20	24x20
A	44	56
B	39	45.25
PRESSURE CLASS	150	200
PART #	HD8202420FM150DIPS	HD8202420FM200DIPS