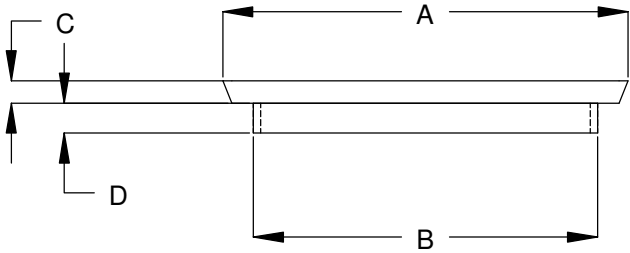
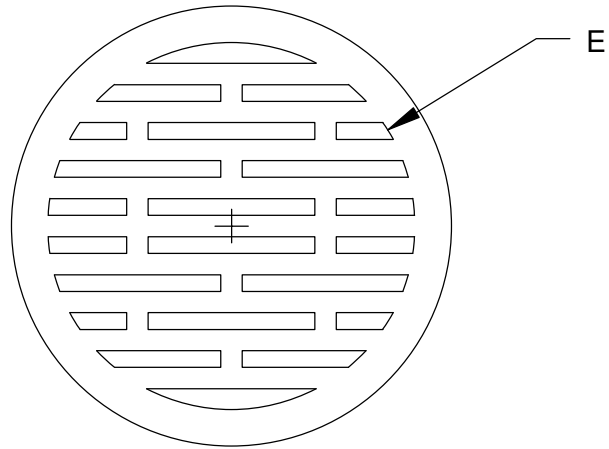


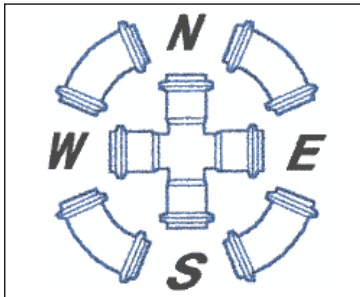


SIZE	A	B	C	D	E	SQ IN OPEN
6"	7.06	5.09	0.75	1.25	5.1	
8"	9.06	7.9	0.75	1.25	9.94	
10"	11.19	9.79	0.75	1.25	8.85	
12"	13.16	11.56	0.75	1	11	
15"	16.13	14.19	0.88	1.38	13.5	
18"	19.69	17.25	1	1.5	16.5	161
24"	25.63	22.5	1	1.5	21.38	165.5
30"	32.38	29.38	1	2.13	28.25	
36"	38.81	34.88	1	2		



**SPECIFICATIONS**

ASTM-A536  
 DOT-H-20 (HEAVY TRAFFIC)  
 PAINTED BLACK  
 MEETS REQUIREMENTS FOR ADA APPROVAL



**SPECIFIED FITTINGS**

164 WEST SMITH ROAD  
 BELLINGHAM WA 98226

TITLE  
**DUCTILE IRON ADA GRATE**

SIZE <b>A4</b>	CAGE CODE	DWG NO	REV
-------------------	-----------	--------	-----

SCALE  
 NOT TO SCALE

SHEET  
 1/1

