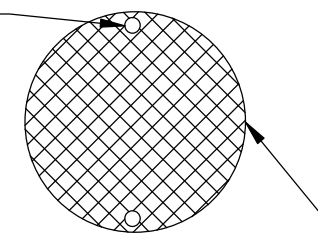
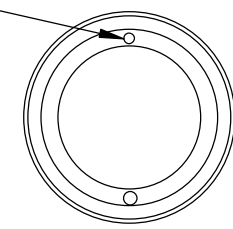


2x LOCATIONS
BORE THRU
FOR BOLT



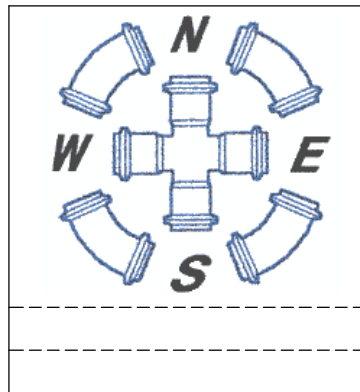
SURFACE OF "SOLID"
COVERS TO BE FACED
WITH CROSS-HATCH
PATTERN. SPECIFIC
PATTERN NOT CRITICAL.

2x LOCATIONS
FIPT TAP
FOR BOLT



SPECIFICATIONS

ASTM-A536
DOT-H-20 (HEAVY TRAFFIC)
PAINTED BLACK



SPECIFIED FITTINGS

164 WEST SMITH ROAD
BELLINGHAM WA 98226

TITLE			
8" DUCTILE IRON LOCKING "SOLID" GRATE & FRAME			
SIZE	CAGE CODE	DWG NO	REV
A4			
SCALE		SHEET	
NOT TO SCALE		1/1	