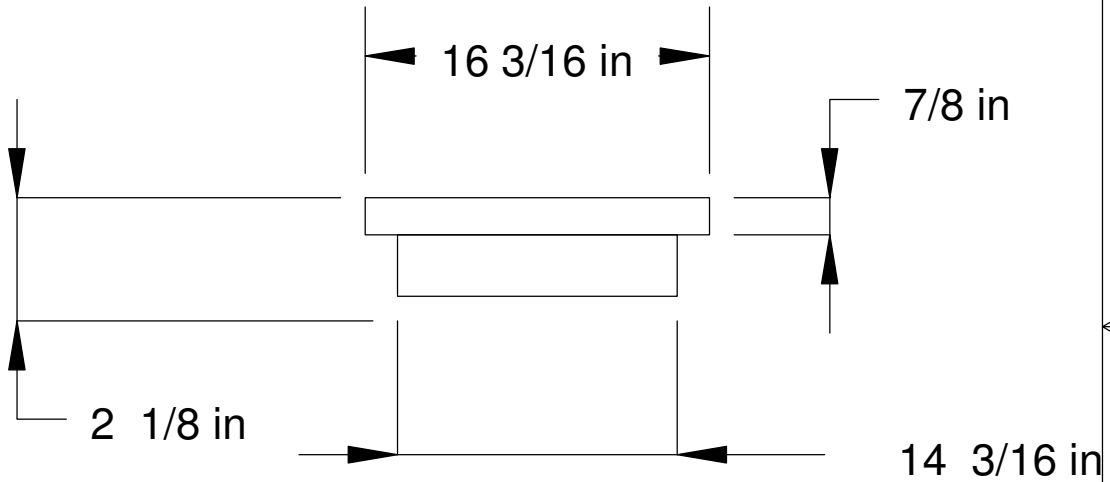
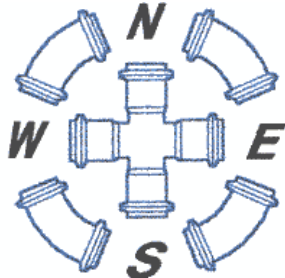


SURFACE OF "SOLID"
COVERS TO BE FACED
WITH CROSS-HATCH
PATTERN. SPECIFIC
PATTERN NOT CRITICAL.



SPECIFICATIONS

ASTM-A536
DOT-H-20 (HEAVY TRAFFIC)
PAINTED BLACK



SPECIFIED FITTINGS

164 WEST SMITH ROAD
BELLINGHAM WA 98226

TITLE
15" DUCTILE IRON SOLID GRATE

SIZE A4	CAGE CODE	DWG NO	REV
-------------------	-----------	--------	-----

SCALE NOT TO SCALE	SHEET 1/1
-----------------------	--------------

