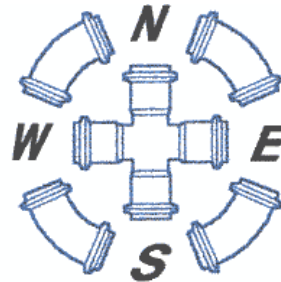
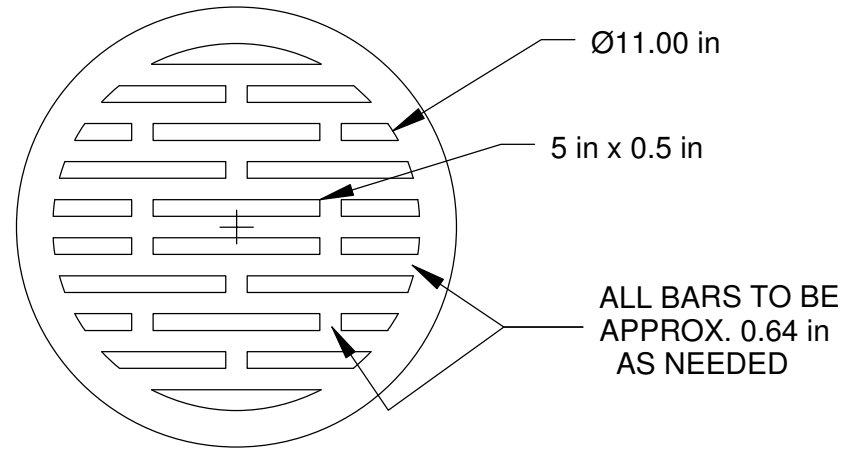
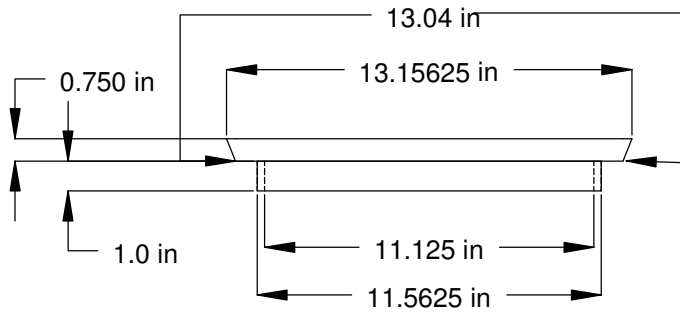


SPECIFICATIONS

ASTM-A536
 DOT-H-20 (HEAVY TRAFFIC)
 PAINTED BLACK
 MEETS REQUIREMENTS FOR ADA APPROVAL

IF LOCKING GRATES ARE REQUIRED, SPECIFIED FITTINGS
 WILL DRILL, TAP AND INSTALL BOLTS THROUGH
 GRATE AND INTO FRAME.



SPECIFIED FITTINGS

164 WEST SMITH ROAD
 BELLINGHAM WA 98226

TITLE			
12" DUCTILE IRON PEDESTRIAN GRATE			
SIZE	CAGE CODE	DWG NO	REV
A4			
SCALE NOT TO SCALE		SHEET 1/1	