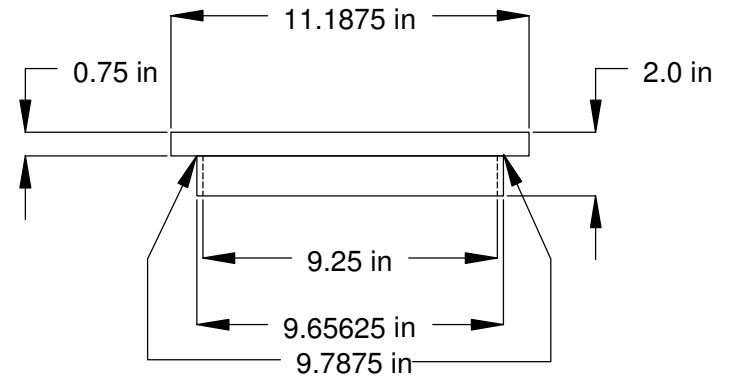
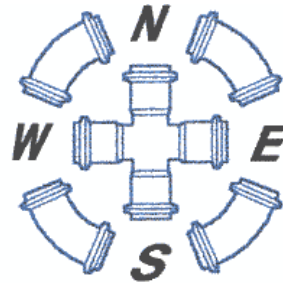


SURFACE OF "SOLID"
COVERS TO BE FACED
WITH CROSS-HATCH
PATTERN. SPECIFIC
PATTERN NOT CRITICAL.



SPECIFICATIONS

ASTM-A536
DOT-H-20 (HEAVY TRAFFIC)
PAINTED BLACK



SPECIFIED FITTINGS

164 WEST SMITH ROAD
BELLINGHAM WA 98226

TITLE

10" DUCTILE IRON SOLID GRATE

SIZE

A4

CAGE CODE

DWG NO

REV

SCALE

NOT TO SCALE

SHEET

1/1